

435/436 Sprinkler



Part No.	Description	Price
101001298	SPRINKLER, 435, 1/2 FPT W/ #2 .055 ORIFI	4.96
101001299	SPRINKLER, 435, 1/2 FPT W/ #3 .059 ORIFI	4.96
101001300	SPRINKLER, 435, 1/2 FPT W/ #5 .078 ORIFI	4.96
101001301	SPRINKLER, 435, 1/2 FPT W/ #7 .093 ORIFI	4.96
101001302	SPRINKLER, 436, 1/2 MPT W/ #2 .055 ORIFI	4.96
101001303	SPRINKLER, 436, 1/2 MPT W/ #3 .059 ORIFI	4.96
101001304	SPRINKLER, 436, 1/2 MPT W/ #5 .078 ORIFI	4.96
101001305	SPRINKLER, 436, 1/2 MPT W/ #7 .093 ORIFI	4.96

Ball Valves

PVC, Slip Ends



Part No.	Description	Price
101000184	1/2" PVC BALL VALVE, EPDM	12.38
101000186	3/4" PVC BALL VALVE, EPDM	14.69
101000188	1" PVC BALL VALVE, EPDM	20.41
101000190	1-1/4" PVC BALL VALVE, EPDM	25.27
101000192	1-1/2" PVC BALL VALVE, EPDM	36.62
101000194	2" PVC BALL VALVE, EPDM	44.58
101000197	2 1/2" PVC BALL VALVE, EPDM	114.05
101000199	3" PVC BALL VALVE, EPDM	118.91
101000202	4" PVC BALL VALVE, EPDM	239.11

PVC, Threaded Ends



Part No.	Description	Price
101000185	1/2" PVC BALL VALVE, THREADED ENDS, EPDM	12.38
101000187	3/4" PVC BALL VALVE, THREADED ENDS, EPDM	14.69
101000189	1" PVC BALL VALVE, THREADED ENDS, EPDM	20.41
101000191	1-1/4" PVC BALL VALVE, THREADED ENDS, EP	25.27
101000193	1-1/2" PVC BALL VALVE, THREADED ENDS, EP	36.62
101000196	2" PVC BALL VALVE, THREADED ENDS, EPDM	44.58
101000198	2 1/2" PVC BALL VALVE, THREADED ENDS, EP	114.05
101000201	3" PVC BALL VALVE, THREADED ENDS, EPDM	118.91
101000204	4" PVC BALL VALVE, THREADED ENDS, EPDM	239.11

Butterfly Valves

PVC, Gear Operated



Part No.	Description	Price
101000151	6" BUTTERFLY VALVE, GEAR OPERATED	623.67
101000153	8" BUTTERFLY VALVE, GEAR OPERATED	948.73
101000159	10" BUTTERFLY VALVE, GEAR OPERATED	1354.91

PVC, Lever Operated



Part No.	Description	Price
101000142	2" PVC BUTTERFLY VALVE, EPDM	178.20
101000144	3" PVC BUTTERFLY VALVE, EPDM	205.73
101000146	4" PVC BUTTERFLY VALVE, EPDM	233.28
101000150	6" PVC BUTTERFLY VALVE, EPDM	329.19
101000152	8" PVC BUTTERFLY VALVE, EPDM	502.84
101000158	10" PVC BUTTERFLY VALVE, EPDM	907.20

Components

Air Valves



Part No.	Description	Price
101001443	1" PLST AIR VACUUM RELIEF VALVE, NPT	8.00
101001446	2" PLASTIC RELIEF AIR VENT	37.61
101001447	2" CONTINUOUS ACTING AIR VENT	78.00

Disk Filters



Part No.	Description	Price
101000897	PLST DISC FILTER W/ PLUG 2" 150 MESH MPT	190.00
101000904	PLST DISC FILTER W/ PLUG 3" 150 MESH MPT	290.30

Pressure Gauges



Part No.	Description	Price
101000929	PRESSURE GAUGE, 0-30 PSI, 2.5", LIQUID	20.00
101000930	PRESSURE GAUGE, 0-60 PSI, 2.5", DRY	7.00
101000931	PRESSURE GAUGE, 0-60 PSI, 2.5", LIQUID	20.00
101000932	PRESSURE GAUGE, 0-100 PSI, 2.5", DRY	7.00
101000933	PRESSURE GAUGE, 0-100 PSI, 2.5", LIQUID	20.00
101000934	PRESSURE GAUGE, 0-150 PSI, 2.5", DRY	7.00

Compression Fittings

Compression Couplings



Part No.	Description	Price
101000520	COMPRESSION COUPLER, 600 SERIES	0.65
101000521	COMPRESSION COUPLER, 700 SERIES	0.65
101000522	COMPRESSION COUPLER, 710 SERIES	0.65
101000523	COMPRESSION COUPLER, GLUED, 1000 SERIES	3.00
101000524	COMPRESSION COUPLER, GLUED, 800 SERIES	1.65
101000525	COMPRESSION COUPLER, GLUED, 900 SERIES	1.65

Compression Tees



Part No.	Description	Price
101000511	COMPRESSION TEE, 600 SERIES	1.00
101000512	COMPRESSION TEE, 700 SERIES	1.00
101000513	COMPRESSION TEE, 710 SERIES	1.00
101000514	COMPRESSION TEE, GLUED, 1000 SERIES	3.50
101000515	COMPRESSION TEE, GLUED, 800 SERIES	2.25
101000516	COMPRESSION TEE, GLUED, 900 SERIES	2.25

Drip Line Fittings

Insert Couplings



Part No.	Description	Price
101001887	BARBED BLACK COUPLING JDW 12X12	0.28
101001888	BARBED BLACK COUPLING JDW 20X20	0.43
101001889	BARBED GREEN S COUPLING JDW 16X16	0.30
101001965	BARBED GREEN COUPLING JDW 17X17	0.43

Drip Line Fittings

Insert Reducers



Part No.	Description	Price
101001970	REDUCING BARBED GRE COUP.17X16	0.42
101003895	REDUCING BARBED GRE COUP.20X17	0.44

Insert Reducers - for Manifolds



Part No.	Description	Price
101000312	INSERT REDUCER, 3" X 2"	28.91
101000314	INSERT REDUCER, 4" X 2"	45.46
101000315	INSERT REDUCER, 4" X 3"	45.46
101000316	INSERT REDUCER, 6" X 4"	91.00

Start Connectors



Part No.	Description	Price
101001883	BARBED BLA START CONNECTOR12MM	0.28
101001884	BARBED BLA START CONNECTOR20MM	0.39
101001885	BARBED GRE START CONNECTOR16MM	0.31
101001886	12,16,17,20 START CONNECTOR GROMMET	0.15
101003837	BARBED GRE START CONNECTOR17MM	0.42

Drip Tape

Hydrodrip

19/32" (15.2 mm)



Part No.	Description	Price
101002312	DRIP SUPER 16/18/1.2/0.30-1500	436.32
101002316	DRIP SUPER 16/18/1.6/0.30-1500	436.32
101008311	DRIP SUPER 16/18/1.6/0.25-1500	441.80

5/8" I.D.



Part No.	Description	Price
101022492	DRIP SUPER 22/10/1.2/0.30-1650	456.39
101022497	DRIP SUPER 22/15/1.2/0.30-1000	378.20
101022510	DRIP SUPER 16/10/1.2/0.30-2200	489.74
101022513	DRIP SUPER 16/15/1.2/0.30-1300	365.32
101022514	DRIP SUPER 16/15/1.6/0.30-1300	365.32

Hydrolite

5/8" I.D.



Part No.	Description	Price
101001961	HYDROLITE 16MM/8MIL 1.0 L/H 0.15M -2200M	441.72
101002559	LITE BLA 16/8/0.65/0.15 -2200M	441.72
101002560	LITE BLA 16/8/0.65/0.30 -2200M	441.72
101002561	HYDROLITE 16MM/8MIL 1.0 L/H 0.30M -2200M	441.72
101012922	LITE BLA 16/6/0.65/0.15 -2700M	480.84
101012923	HYDROLITE 16MM/6MIL 1.0 L/H 0.15M -2700M	480.84
101012924	HYDROLITE 16MM/6MIL 1.0 L/H 0.30M -2700M	480.84

Drip Tape

Hydrolite

7/8" I.D.

Part No.	Description	Price
101001962	LITE BLA 22/8/0.65/0.30 -1600M	432.00
101002548	LITE BLA 22/12/1.0/0.30 -1200M	396.70
101002550	LITE BLA 22/10/1.0/0.30 -1340M	386.97
101018354	HYDROLITE 22MM/8MIL 1.0 L/H 0.30M -1600M	432.00

Ro-Drip

5/8" I.D.

Part No.	Description	Price
101001195	RO-DRIP 5 MIL 4 40 GPH, 5/8 ID, 12500FT	282.22
101001198	RO-DRIP 5 MIL 8 20 GPH, 5/8 ID, 12500 FT	282.22
101001199	RO-DRIP 5 MIL 8 27 GPH, 5/8 ID, 12500 FT	282.22
101001200	RO-DRIP 5 MIL 8 40 GPH, 5/8 ID, 12500 FT	282.22
101001201	RO-DRIP 5 MIL 12 15 GPH 5/8 ID, 12500 FT	282.22
101001202	RO-DRIP 5 MIL 12 24 GPH 5/8 ID, 12500 FT	282.22
101001203	RO-DRIP 6 MIL 4 40 GPH, 5/8 ID, 10000 FT	258.32
101001204	RO-DRIP 6 MIL 4 60 GPH, 5/8 ID, 10000 FT	258.32
101001209	RO-DRIP 6 MIL 8 20 GPH, 5/8 ID, 10000 FT	258.32
101001210	RO-DRIP 6 MIL 8" 27 GPH, 5/8 ID, 10000 F	258.32
101001211	RO-DRIP 6 MIL 8 40 GPH, 5/8 ID, 10000 FT	258.32
101001213	RO-DRIP 6 MIL 12" 15 GPH, 5/8 ID, 10000	258.32
101001214	RO-DRIP 6 MIL 12 24 GPH, 5/8 ID, 10000 F	258.32
101001218	RO-DRIP 8 MIL 4 40 GPH, 5/8 ID, 7500 FT	228.39
101001220	RO-DRIP 8 MIL 4 60 GPH, 5/8 ID, 7500 FT	228.39
101001223	RO-DRIP 8 MIL 8 20 GPH, 5/8 ID, 7500 FT	228.39
101001224	RO-DRIP 8 MIL 8 27 GPH, 5/8 ID, 7500 FT	228.39
101001228	RO-DRIP 8 MIL 8 40 GPH, 5/8 ID, 7500 FT	228.39
101001229	RO-DRIP 8 MIL 12 15 GPH, 5/8 ID, 7500 FT	228.39
101001231	RO-DRIP 8 MIL 12 24 GPH, 5/8 ID, 5200 FT	207.39
101001232	RO-DRIP 8 MIL 12 24 GPH, 5/8 ID, 7500 FT	228.39
101001234	RO-DRIP 8 MIL 16 20 GPH, 5/8 ID, 7500 FT	228.39
101001237	RO-DRIP 10 MIL 12 24 GPH 5/8 ID, 6000 FT	214.90

7/8" I.D.

Part No.	Description	Price
101001263	RO-DRIP XL 8 MIL 8" 40 GPH, 7/8 ID, 5700	221.15
101001264	RO-DRIP XL 8 MIL 12 15 GPH 7/8 ID, 5700	221.15
101001265	RO-DRIP XL 8 MIL 12 24 GPH 7/8 ID, 5700	221.15
101001267	RO-DRIP XL 10 MIL 12 15 GPH 7/8 ID, 5000	225.84

T-Tape

5/8" I.D.

Part No.	Description	Price
101000941	T-TAPE TSX500,10MIL,24IN .470Q100,6004FT	236.47
101000942	T-TAPE TSX500,10MIL,36IN .310Q100,6000FT	236.47
101001043	T-TAPE PRO SERIES500,6MIL,6IN...450Q100,	272.85
101001471	T-TAPE 500,5MIL,8IN...340Q100,12000FT	262.15
101001472	T-TAPE 500,5MIL,8IN...450Q100,12000FT	262.15
101001473	T-TAPE 500,5MIL,8IN...500Q100,12000FT.	262.15
101001474	T-TAPE 500,5MIL,8IN...670Q100,12000FT	262.15
101001477	T-TAPE 500,5MIL,12IN...450Q100,12000FT	262.15
101001479	T-TAPE 500,6MIL,8IN...340Q100,10000FT	272.85
101001480	T-TAPE 500,6MIL,8IN...500Q100,10000FT.	272.85



Drip Tape

T-Tape

5/8" I.D.

Part No.	Description	Price
101001481	T-TAPE 500,6MIL,8IN.,.670Q100,10000FT	272.85
101001485	T-TAPE 500,6MIL,12IN.,.340Q100,10000FT	272.85
101001488	T-TAPE 500,6MIL,12IN.,.450Q100,10000FT	272.85
101001490	T-TAPE 500,8MIL,4IN.,.1.0Q100,7546FT.	233.26
101001492	T-TAPE 500,8MIL,8IN.,.340Q100,7546FT	233.26
101001494	T-TAPE 500,8MIL,8IN.,.670Q100,7546FT	233.26
101001499	T-TAPE 500,8MIL,12IN.,.340Q100,7546FT	233.26
101001500	T-TAPE 500,8MIL,12IN.,.450Q100,7546FT	233.26
101001511	T-TAPE 500,10MIL,8IN.,.670Q100,6004FT	236.47
101001515	T-TAPE 500,10MIL,12IN.,.450Q100,6004FT	236.47
101001661	T-TAPE TSX500,5MIL,4IN.,.1.0 Q100,12000F	262.15
101001663	T-TAPE TSX500,5MIL,6IN.,.670Q100,12000F	262.15
101001675	T-TAPE TSX500,6MIL,4IN. 1.0Q100,10000FT.	272.85
101001679	T-TAPE TSX500,6MIL,6IN.,.670Q100,10000F	272.85
101001691	T-TAPE TSX500,6MIL,16IN. .340Q100,10000F	272.85
101001712	T-TAPE TSX500,8MIL,16IN. .340Q100,7500FT	233.26
101001727	T-TAPE TSX500,10MIL,16IN..340Q100,6000FT	236.47
101001738	T-TAPE TSX500,12MIL,12IN.450Q100,5100FT	235.40
101001744	T-TAPE TSX500,15MIL,8IN. .500Q100,4100FT	224.70
101001748	T-TAPE TSX500,15MIL,12IN.450Q100,4100FT	224.70
101001869	T-TAPE 500,8MIL,8IN.,.500Q100,7546FT	233.26

5/8" I.D. (Low Flow)



Part No.	Description	Price
101001470	T-TAPE 500,5MIL,8IN.,.170Q100,12000FT	286.76
101001475	T-TAPE 500,5MIL,12IN.,.220Q100,12000FT	262.15
101001482	T-TAPE 500,6MIL,12IN.,.220Q100,10000FT	272.85
101001497	T-TAPE 500,8MIL,12IN.,.220Q100,7546FT	233.26
101001512	T-TAPE 500,10MIL,12IN.,.220Q100,6004FT	236.47
101001662	T-TAPE TSX500,5MIL,6IN.,.220Q100,12000F	286.76
101001669	T-TAPE TSX500,5MIL,9IN.,.150Q100,12000F	286.76
101001709	T-TAPE TSX500,8MIL,16IN.,.170Q100,7500FT	233.26

7/8" I.D.



Part No.	Description	Price
101001049	T-TAPE PRO SERIES700,10MIL,6IN.,.450Q100	245.03
101001530	T-TAPE 700,6MIL,12IN.,.340Q100,7380FT	260.01
101001534	T-TAPE 700,8MIL,8IN.,.340Q100,5560FT	279.27
101001542	T-TAPE 700,8MIL,12IN.,.340Q100,5560FT	279.27
101001543	T-TAPE 700,8MIL,12IN.,.450Q100,5560FT	279.27
101001544	T-TAPE 700,10MIL,8IN.,.340Q100,4400FT	245.03
101001554	T-TAPE 700,10MIL,12IN.,.450Q100,4400FT	245.03
101001805	T-TAPE TSX700,15MIL,8IN.,.340Q100,3000FT	208.65
101001814	T-TAPE TSX700,15MIL,12IN..340Q100,3000FT	208.65
101001815	T-TAPE TSX700,15MIL,12IN..450Q100,3000FT	208.65
101001817	T-TAPE TSX700,15MIL,16IN.,.280Q100,3000F	208.65

7/8" I.D. (Low Flow)



Part No.	Description	Price
101001523	T-TAPE 700,6MIL,12IN.,.220Q100,7380FT	260.01
101001536	T-TAPE 700,8MIL,12IN.,.220Q100,5560FT	279.27
101001546	T-TAPE 700,10MIL,12IN.,.220Q100,4400FT	245.03
101001550	T-TAPE 700,10MIL,12IN.,.220Q100,4000FT	245.03
101001555	T-TAPE 700,15MIL,12IN.,.220Q100,3002FT	208.65
101001558	T-TAPE 700,15MIL,12IN.,.220Q100,2700FT	188.32
101001767	T-TAPE TSX700,6MIL,6IN.,.220Q100,7380FT	260.01



Drip Tape Fittings

Pro-Grip - Assemblies with Barbed Fitting



Part No.	Description	Price
101001080	PG ASSY, 5/8 TAPE X 400 BARB W/ 12" .375	1.05
101001081	PG ASSY, 5/8 TAPE X 400 BARB W/ 18" .375	1.05
101001082	PG ASSY, 5/8 TAPE X 400 BARB W/ 24" .375	1.05
101001084	PG ASSY, 3/4 TAPE X 425 BARB W/12" .520	1.35
101001085	PG ASSY, 7/8 TAPE X 425 BARB W/ 12" .520	1.75
101001086	PG ASSY, 3/4 TAPE X 425 BARB W/ 18" .520	1.35
101001087	PG ASSY, 7/8 TAPE X 425 BARB W/ 18" .520	1.75
101001088	PG ASSY, 3/4 TAPE X 425 BARB W/ 24" .520	1.35
101001089	PG ASSY, 7/8 TAPE X 425 BARB W/ 24" .520	1.75
101001095	PG ASSY, 7/8 TAPE X 700 BARB W/ 12" .600	1.75
101001096	PG ASSY, 7/8 TAPE X 700 BARB W/ 18" .600	1.75
101001097	PG ASSY, 7/8 TAPE X 700 BARB W/ 24" .600	1.75
101001098	PG ASSY, 7/8 TAPE X 700 BARB W/ 42" .600	0.90

Pro-Grip - Assemblies with Male Hose Thread Fitting



Part No.	Description	Price
101001127	PG ASSY, 3/4" MHT X 5/8 TAPE W/ 12" .520	1.25
101001128	PG ASSY, 3/4 TAPE X 3/4 MHT W/ 12" .520	1.50
101001129	PG ASSY, 7/8 TAPE X 3/4 MHT W/ 12" .520	1.90
101001130	PG ASSY, 3/4 TAPE X 3/4 MHT W/ 18" .520	1.50
101001131	PG ASSY, 7/8 TAPE X 3/4 MHT W/ 18" .520	1.90
101001132	PG ASSY, 3/4 TAPE X 3/4 MHT W/ 24" .520	1.50
101001133	PG ASSY, 7/8 TAPE X 3/4 MHT W/ 24" .520	1.90
101001134	PG ASSY, 7/8 TAPE X 3/4 MHT W/ 12" .600	1.90
101001135	PG ASSY, 7/8 TAPE X 3/4 MHT W/ 18" .600	1.90
101001136	PG ASSY, 7/8 TAPE X 3/4 MHT W/ 24" .600	1.90

Pro-Grip - Barbed fittings and Grommets



Part No.	Description	Price
101001083	PRO GRIP, 400 TRANSFER BARB	0.20
101001090	PRO GRIP 425 BARB X 520 BARB	0.20
101001091	PRO GRIP, 425 BARB X 520 BARB WITH GROMM	0.40
101001092	PRO GRIP, 520 TRANSFER BARB	0.20
101001093	PRO GRIP, 520 BARB TEE	0.31
101001099	PRO GRIP, 700 TRANSFER BARB	0.20
101001102	PRO GRIP, H STYLE GROMMET	0.22
101001103	PRO GRIP, RUBBER RING, 12MM	0.15
101001104	PRO GRIP, TAKE OFF GROMMET, 15 MM, T STY	0.22
101001105	PRO GRIP, TAKE OFF GROMMET, 17 MM, T STY	0.22
101001106	PRO GRIP, TAKE OFF GROMMETT, 19MM, TSTYL	0.40

Pro-Grip - Couplings



Part No.	Description	Price
101001157	PRO GRIP, 5/8 TAPE COUPLING	0.48
101001171	PRO GRIP, 3/4 TAPE COUPLING	0.86
101001180	PRO GRIP, 7/8 TAPE COUPLING	0.96

Pro-Grip - Layflat Fittings



Part No.	Description	Price
101001113	PRO GRIP, LAY FLAT X 400 BARB	0.60
101001114	PRO GRIP, LAY FLAT X 520 BARB	0.60
101001115	PRO GRIP, LAY FLAT X 700 BARB	0.60
101001116	PRO GRIP, LAY FLAT X 3/4" SWIVEL	0.99
101001117	PG LAY FLAT X 3/4" FPT SWIVEL W/ WASHER	0.99
101001154	PRO GRIP, 5/8 TAPE X LAY FLAT	0.80

Drip Tape Fittings

Pro-Grip - Tape Flush and Ends



Part No.	Description	Price
101001100	PRO GRIP, 3/4" FHT CAP	0.50
101001101	PRO GRIP, 3/4" FHT X FLUSH VALVE, 3 PSI	1.35
101001148	PRO GRIP, 5/8 TAPE X 3/4" END CAP	0.95
101001153	PRO GRIP, 5/8 TAPE X FLUSH VALVE, 3 PSI	1.75
101038364	PRO GRIP, 7/8 TAPE X 3/4" END CAP	1.35

Pro-Grip - Tape Tee Fittings



Part No.	Description	Price
101001158	PRO GRIP, 5/8 TAPE TEE X 520 BARB	1.60
101001159	PRO GRIP, 5/8 TAPE TEE X 3/4 MHT	1.60
101001160	PRO GRIP, 5/8 TAPE TEE X 3/4 MPT	1.60
101001161	PRO GRIP, 5/8 TAPE TEE X 1/2 SOCKET	1.60
101001162	PRO GRIP, 5/8 TAPE COUPLING TEE	1.70

Pro-Grip - Tape x Barb



Part No.	Description	Price
101001143	PRO GRIP, 5/8 TAPE X 250 BARB	0.40
101001144	PRO GRIP, 5/8 TAPE X 400 BARB	0.40
101001145	PRO GRIP, 5/8 TAPE X 520 BARB	0.40
101001146	PRO GRIP, 5/8 TAPE X 700 BARB	0.40
101001163	PRO GRIP, 3/4 TAPE X 400 BARB	0.60
101001164	PRO GRIP, 3/4 TAPE X 520 BARB	0.60
101001165	PRO GRIP, 3/4 TAPE X 700 BARB	0.60
101001173	PRO GRIP, 7/8 TAPE X 520 BARB	1.00
101001174	PRO GRIP, 7/8 TAPE X 700 BARB	1.00

Pro-Grip - Tape x Socket



Part No.	Description	Price
101001170	PRO GRIP, 3/4 TAPE X 1/2 SOCKET	0.90
101001179	PRO GRIP, 7/8 TAPE X 1/2 SOCKET	0.90

Pro-Grip - Tape x Thread



Part No.	Description	Price
101001150	PRO GRIP, 5/8 TAPE X 3/4 FHT W/ SCREEN	1.45
101001151	PRO GRIP, 5/8 TAPE X 3/4 FHT W/ WASHER	1.15
101001152	PRO GRIP, 5/8" TAPE COUPLING X 3/4" FPT	1.15
101001155	PRO GRIP, 5/8 TAPE X 3/4 MHT	0.45
101001156	PRO GRIP, 5/8 TAPE X 1/2 MPT	0.45
101001168	PRO GRIP, 3/4 TAPE X 3/4 MHT	0.75
101001169	PRO GRIP, 3/4 TAPE X 3/4 MPT	0.75
101001177	PRO GRIP, 7/8 TAPE X 3/4 MHT	0.85
101001178	PRO GRIP, 7/8 TAPE X 3/4 MPT	0.85

Pro-Grip - Testing Fittings



Part No.	Description	Price
101001147	PRO GRIP, 5/8 TAPE COUPLING TEST FITTING	8.00
101001149	PRO GRIP, 5/8 TAPE END TEST FITTING	8.00
101001166	PRO GRIP, 3/4 TAPE COUPLING TEST FITTING	8.10
101001167	PROGRIP, 3/4 TAPE END TEST FITTING	8.10
101001175	PROGRIP, 7/8 TAPE COUPLING TEST FITTING	8.25
101001176	PROGRIP, 7/8 TAPE END TEST FITTING	8.25

Drip Tape Fittings

Pro-Grip - Thread x Barbed, Plug



Part No.	Description	Price
101001137	PRO GRIP, 3/4 MHT X 400 BARB	0.35
101001138	PRO GRIP, 3/4 MHT X 520 BARB	0.35
101001139	PRO GRIP, 3/4 MHT X 700 BARB	0.37
101001140	PRO GRIP, 3/4 MHT X PLUG	0.35
101001141	PRO GRIP 3/4" MPT X 520 BARB	0.35
101001142	PRO GRIP 3/4" MPT X 720 BARB	0.37

Pro-Grip - Valved Fittings



Part No.	Description	Price
101001094	PRO GRIP, 520 BARB X 520 BARB W/ VALVE	1.03
101001846	PRO GRIP, 5/8 TAPE X 425 BARB W/ VALVE	1.27
101001847	PRO GRIP, 5/8 TAPE X 500 BARB W/ VALVE	1.16
101001848	PRO GRIP, 5/8 TAPE X 520 BARB W/ VALVE	1.04
101001849	PRO GRIP, 5/8 TAPE X 3/4 MHT W/ VALVE	1.04
101001850	PRO GRIP, 5/8 TAPE X 3/4 MPT W/ VALVE	1.04
101001851	PRO GRIP, 5/8 TAPE X 5/8 TAPE W/ VALVE	1.06

Retrieval Fittings



Part No.	Description	Price
101008263	COUPLER, RETRIEVE, REPAIR, 7/8 TAPE	3.90
101008285	NUT COUPLER WRENCH,STEEL.	54.18
101008287	BODY COUPLER WRENCH,STEEL.	29.62
101008288	NUT COUPLER WRENCH,PLASTIC	23.84
101008289	BODY COUPLER WRENCH,PLASTIC	19.03

Dripline

Hydro PCND

17 mm/ 45 mil



Part No.	Description	Price
101021917	PCND 17/45/2.35/0.61M 305M (2 OUTLETS)	257.17
101021918	PCND 17/45/2.35/0.91M 305M (2 OUTLETS)	240.09
101021919	PCND 17/45/3.75/0.76M 305M (2 OUTLETS)	246.92
101021920	PCND 17/45/3.75/0.91M 305M (2 OUTLETS)	240.09

Hydrogol

16 mm/ 45 mil




Part No.	Description	Price
101021893	GOLBLA 16/45/2.0/0.46-305M*	170.19
101021894	GOLBLA 16/45/2.0/0.61-305M*	165.91
101021895	GOLBLA 16/45/2.0/0.76-305M*	163.38
101021896	GOLBLA 16/45/2.0/0.91-305M*	161.53
101021897	GOLBLA 16/45/4.0/0.91-305M*	161.53
101022446	GOLBLA 16/45/2.0/1.07-305M*	160.18
101023030	HYDROGOL BLA 16/45/2.0/0.30-305M (2 OUT)	183.49
101023034	GOL WHITE 16/45/2.0/0.61-305M (2 OUT)	165.91
101023035	GOL WHITE 16/45/2.0/0.76-305M (2 OUT)	163.38
101023036	GOL WHITE 16/45/2.0/0.91-305M (2 OUT)	161.53

Dripline


Hydrogol

20 mm/ 45 mil


	Part No.	Description	Price
	101021898	GOLBLA 20/45/2.0/0.61-305M*	201.54
	101021899	GOLBLA 20/45/2.0/0.76-305M*	198.20
	101021900	GOLBLA 20/45/4.0/0.91-305M*	195.84
	101022771	GOLBLA 20/45/4.0/1.07-305M*	194.04
	101023037	GOL WHITE 20/45/2.0/0.61-305M (2 OUT)	201.54
	101023038	GOL WHITE 20/45/2.0/0.91-305M (2 OUT)	195.84
	101023039	GOL WHITE 20/45/2.0/0.76 305M (2 OUT)	198.20

Hyrdo PC

17 mm/ 45mil


	Part No.	Description	Price
	101021901	HYDRO-PC 17/45/1.6/0.46 305M*	266.13
	101021903	HYDRO-PC 17/45/1.6/0.61 305M*	249.50
	101021904	HYDRO-PC 17/45/2.2/0.61 305M*	249.50
	101021905	HYDRO-PC WHITE 17/45/2.2/0.61	249.50
	101021906	HYDRO-PC 17/45/2.2/0.76 305M*	239.54
	101021907	HYDRO-PC WHITE 17/45/2.2/0.76	239.54
	101021908	HYDRO-PC 17/45/2.2/0.91 305M*	232.87
	101021909	HYDRO-PC WHITE 17/45/2.2/0.91	232.87
	101021910	HYDRO-PC WHITE 17/45/2.2/1.07	227.53
	101021911	HYDRO-PC 17/45/3.6/0.76 305M*	239.54
	101021912	HYDRO-PC 17/45/3.6/0.91 305M*	232.87
	101021913	HYDRO-PC WHITE 17/45/3.6/0.91	232.87
	101022772	HYDRO-PC 17/45/2.2/1.07 305M*	227.53
	101023040	HYDRO-PC 17/45/2.2/0.30-305M (2 OUT)	295.98
	101023046	PC WHITE 17/45/1.6/0.61 -305M (2 OUT)	249.50
	101023047	PC WHITE 17/45/1.6/0.76 -305M (2 OUT)	239.54
	101023048	PC WHITE 17/45/1.6/0.91 -305M (2 OUT)	232.87
	101038666	PC WHITE 17/45/2.2/0.46 305M (2 OUT)	266.13

20 mm/ 47mil

	Part No.	Description	Price
	101021914	HYDRO-PC 20/47/1.2/0.46 305M*	318.48
	101021915	HYDRO-PC 20/47/1.6/0.46 305M*	318.48
	101021916	HYDRO-PC 20/47/1.6/0.61 305M*	299.76
	101022382	HYDRO-PC 20/47/1.6/0.91 305M*	280.78
	101022387	HYDRO-PC 20/47/2.2/0.91 305M*	280.78
	101022393	HYDRO-PC 20/47/3.6/0.91 305M*	280.78
	101023049	PC WHITE 20/47/1.6/0.61 -305M (2 OUT)	299.76
	101023050	PC WHITE 20/47/1.6/0.76 -305M (2 OUT)	288.36
	101023051	PC WHITE 20/47/1.6/0.91 -305M (2 OUT)	280.78
	101023052	PC WHITE 20/47/2.2/0.61 -305M (2 OUT)	299.76
	101023053	PC WHITE 20/47/2.2/0.76-305M (2 OUT)	288.36

FLF (Fogger Low Flow)

2-Way and 4-Way

	Part No.	Description	Price
	101003664	F.L.F 4 WAY FOGGER ASS.L.BLUE	3.60
	101008234	F.L.F 2 WAY FOGGER ASS.L.BLUE	1.99
	101009819	F.L.F 4 WAY FOGGER ASS.D.BLU 1	3.60



FLF (Fogger Low Flow)

FLF - With HP Anti-Leak Valve



Part No.	Description	Price
101003667	F.L.F SINGLE FOGGER ASS.L.BLUE	2.99
101003671	F.L.F 4 WAY FOGGER ASS.D.BLU 1	4.74
101003673	F.L.F 4 WAY FOGGER ASS.L.BLUE	4.74
101003675	F.L.F 2 WAY FOGGER ASS.L.BLUE	3.13
101003679	F.L.F SINGLE FOGGER ASS.L.BLUE	2.99

FLF and Sprinkler Accessories

Fogger and Sprinkler Accessories



Part No.	Description	Price
101001882	6MM MALE CONIC PLUNGER	0.19
101001966	6MM FEMALE CONIC PLUNGER	0.18
101003723	SPRINKLER TUBE WEIGHT (WHITE)	0.61
101003735	6MM CONICAL NIPPLE	0.72
101003736	6MM CONICAL SOCKET	0.20
101003738	TORNADO DAN ADAPTOR	0.44
201000202	ANTI LEAK CONIC FEMALEXCONIC MALE	1.85
201000203	ANTI LEAK BARBXCONIC FEMALE	1.85
201000204	ANTI LEAK BARBXCONIC MALE	1.85
201000205	4X7MM BLUE BARB COUPLING	0.05
201000206	CONIC RISER CAP 1/2" FOR RONDO	0.21
201000236	ANTI LEAK H CONIC FEMALEXCONIC MALE	1.85
201000276	CONIC RISER CAP 1/2" F/TORNADO	0.21

FLF Assemblies

Assemblies for Foggers and Sprinklers



Part No.	Description	Price
101003694	4X7MM PVC -60CM +4X7BL.CP 6MM M +WEIGHT	3.19
101012467	4X7MM PVC -30CM +4X7BL.CP 6MM M +WEIGHT	2.84
101022571	4X7MM PVC -45CM +4X7BL.CP 6MM M +WEIGHT	3.00
101022572	4X7MM PVC -75CM +4X7BL.CP 6MM M +WEIGHT	3.37
101022573	4X7MM PVC -90CM +4X7BL.CP 6MM M +WEIGHT	3.55
101022574	4X7MM PVC -122CM +4X7BL.CP 6MM M +WEIGHT	3.94
101022575	4X7MM PVC -122CM +4X7BL.CP	1.71

Jet+/JFR Jet Sprayers

Jet+ Jet Sprayer



Part No.	Description	Price
101003470	.JET+ ULTRA TH 5MM GREEN 360°*	0.65
101003472	JET+ ?3/8"XC.F BLUE 300°*	0.64
101003474	JET+ ?3/8"XC.F DARK BLUE 300°*	0.64
101003475	JET+ ?3/8"XC.F GREEN 300°*	0.64
101003476	JET+ ?3/8"XC.F DARK BLUE 360°*	0.64
101003477	JET+ ?3/8"XC.F RED 360°*	0.64
101003478	JET+ ?3/8"XC.F GREEN 360°*	0.64
101003479	JET+ ?3/8"XC.F BLACK 360°*	0.64
101003483	JET+ ?3/8"XC.F BLUE 360°*	0.64
101003484	JET+ ?3/8"XC.F BLACK 300°*	0.64
101003485	JET+ ?3/8"XC.F RED 300°*	0.64
101010936	JET+ ULTRA THREADED 5MM RED 102 L/H 360°	0.65
201000153	JET+ ULTRA TH 5MM DARK BLUE 36	0.65
201000154	JET+ ULTRA THREADED 5MM BLUE 51 L/H 360°	0.65
201000155	JET+ ULTRA TH 5MM BLACK 360°*	0.65

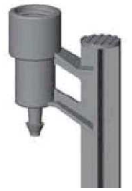
Jet+/JFR Jet Sprayers

JFR Jet Sprayer - with Flow Regulation



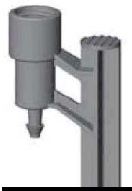
Part No.	Description	Price
101003502	J.F.R BLACK 23 L/H 360°	0.92
101003503	J.F.R BLUE 30 L/H 360°	0.92
101003504	J.F.R RED 70 L/H 360°	0.92
101003506	J.F.R DARK BLUE 41 L/H 300°	0.92
101003507	J.F.R BLUE 30 L/H 300°	0.92
101003508	J.F.R RED 70 L/H 300°	0.92
101003509	J.F.R WHITE 95 L/H 360°	0.92
101003512	J.F.R GREEN 53 L/H 300°	0.92
101003513	J.F.R WHITE 95 L/H 300°	0.92
201000156	J.F.R GREEN 53 L/H 360°	0.92
201000157	J.F.R DARK BLUE 41 L/H 360°	0.92

Jet+/JFR Jet Sprayers and Accessories



Part No.	Description	Price
101003699	PE 4X7MM -75CM +4X7BL.CP	0.97
101003702	PE 4X7MM -100CM +4X7BL.CP	1.20
101013568	MSA44 +PE 4X7 -100CM 4X7BL.CP	1.23
101022682	PE 4X7MM -122CM +4X7BL.CP	1.42
201000258	CLIP HAMMER STAKE BLACK CANTAD	0.50
201000259	SPIKED STAKE BLACK CANTAL 35CM	0.40
201000788	BLACK RANGE LIMTER FOR JET+&J.F.R	0.57

Stake Assemblies



Part No.	Description	Price
101003715	SUPER 4X7 STAKE+PE4X7-60CM+4X7	1.46
101003716	SUPER 4X7 STAKE+PE4X7-100CM+4X7	1.64
101022683	SUPER 4X7 STAKE+PE4X7-75CM 4X7	1.49

Manifold Fittings

Insert Accessories

Part No.	Description	Price
101000339	STAINLESS STEEL HOSE CLAMP, 3"	1.99
101000340	STAINLESS STEEL HOSE CLAMP, 4"	2.10
101000341	STAINLESS STEEL HOSE CLAMP, 6"	3.38
101001955	4" CLAMPO T-BOLT CLAMP	8.33
101001956	6" CLAMPO T-BOLT CLAMP	11.42

Insert Coupling



Part No.	Description	Price
101000252	INSERT COUPLING, 1 1/2" (40 MM)	1.64
101000254	INSERT COUPLING, 2"	3.46
101000255	INSERT COUPLING, 3"	8.95
101000256	INSERT COUPLING, 4"	12.66
101000258	INSERT COUPLING, 6"	49.60

Insert Elbow



Part No.	Description	Price
101000280	INSERT ELBOW, 1 1/2"	2.25
101000281	INSERT ELBOW, 2"	4.67
101000282	INSERT ELBOW, 3"	19.48
101000285	INSERT ELBOW, 4"	45.65
101000288	INSERT ELBOW, 6" / 150 MM	169.20

Manifold Fittings

Insert Female Adapters



Part No.	Description	Price
101000263	INSERT FEMALE ADAPTER, 1 1/2" (40 MM)	6.09
101000264	INSERT FEMALE ADAPTER, 2"	8.21
101000268	INSERT FEMALE ADAPTER, 3"	24.04

Insert Male Adapters



Part No.	Description	Price
101000289	INSERT MALE ADAPTER, 1 1/2"	1.52
101000293	INSERT MALE ADAPTER, 2"	2.86
101000296	INSERT MALE ADAPTOR, 3"	12.35
101000299	INSERT MALE ADAPTER, 4"	17.35

Insert Plugs



Part No.	Description	Price
101000305	INSERT PLUG, 2"	4.49
101000307	INSERT PLUG, 3"	18.38
101000308	INSERT PLUG, 4"	21.79
101000309	INSERT PLUG, 6"	117.59

Insert Slip Adapters



Part No.	Description	Price
101000276	INSERT X IPS SLIP ADAPTER, 2.080 X 2.375	5.80
101000277	INSERT X IPS SLIP ADAPTER, 3.075 X 3.500	15.90
101000278	INSERT X IPS SLIP ADAPTER, 4.100 X 4.500	17.75
101000279	INSERT X IPS SLIP ADAPTER, 6.100 X 6.625	74.60

Insert Spigot Adapters

Part No.	Description	Price
101000271	INSERT SPIGOT ADAPTER, 2"	5.50
101000272	INSERT SPIGOT ADAPTER, 3"	14.00
101000273	INSERT SPIGOT ADAPTER, 4"	15.80
101000274	INSERT SPIGOT ADAPTER, 6"	68.00

Insert Tees



Part No.	Description	Price
101000317	INSERT TEE, 1 1/2"	3.40
101000318	INSERT TEE, 2"	7.42
101000320	INSERT TEE, 3"	27.39
101000323	INSERT TEE, 4"	77.11
101000326	INSERT TEE, 6"	266.10

Insert Tools

Part No.	Description	Price
101000358	LAYFLAT PLUG REPAIR TOOL / GUN	145.35

Online Drippers

Accessories

3/5 Flex Polyethylene White Tube



Part No.	Description	Price
101003336	MICROTUBE WHITE SOFT PE 3X5MM 0.60M	0.14
101013009	MICROTUBE 3/5 WHITE PES 3X5MM -500M	115.00
101022563	MICROTUBE WHITE SOFT PE 3X5MM 0.75M	0.17
101022564	MICROTUBE WHITE SOFT PE 3X5MM 0.90M	0.26
101022832	MICROTUBE WHITE SOFT PE 3X5MM 0.45M	0.10

Pegs (Stakes) and Weights



Part No.	Description	Price
101003308	BLACK DRIPEG	0.11
101008233	GRAY BARPEG	0.11
101022973	ZINC WEIGHT F/3X5MM MICROTUBE*	0.40
201000247	GRAY SNAPEG	0.12

Adapters for Drip Emitters



Part No.	Description	Price
201000073	1 THREADED OUTLET FOR MICROTUBE 3X5MM	0.09
201000074	4 THREADED OUTLET FOR MICROTUBE 3X5MM	0.13
201000246	2 THREADED OUTLET FOR MICROTUBE 3X5MM	0.13

Supertif



Part No.	Description	Price
101003183	SUPERTIF 25 L/H	0.27
201000058	SUPERTIF 2.2 L/H	0.27
201000059	SUPERTIF 8 L/H	0.27
201000060	SUPERTIF 12 L/H	0.27
201000240	SUPERTIF 2.2 L/H SLB	0.27
201000242	SUPERTIF 3.85 L/H	0.27

Supertif Hanging Basket Assemblies



Part No.	Description	Price
101038384	BDA SUPERTIF ND SLB 2.2 W3/5 .45M +ZWT	0.86
101038385	BDA SUPERTIF ND SLB 2.2 W3/5 .60M +ZWT	0.92
101038386	BDA SUPERTIF ND SLB 2.2 W3/5 .90M +ZWT	0.98
101038387	BDA SUPERTIF ND SLB 2.2 W3/5 1.22M +ZWT	1.06

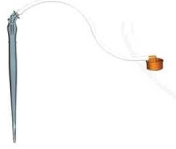
Supertif ND



Part No.	Description	Price
101003187	SUPERTIF ND 1.1 L/H SOL	0.27
101003191	SUPERTIF ND 2.2 L/H SOL	0.27
101003195	SUPERTIF ND 3.85 L/H SOL	0.27
201000061	SUPERTIF ND 2.2 L/H	0.27
201000062	SUPERTIF ND 3.85 L/H	0.27
201000064	SUPERTIF ND 8 L/H	0.27
201000241	SUPERTIF ND 2.2 L/H SLB	0.27


Online Drippers

Supertif ND Single Stake Assemblies w/ Barpeg




Part No.	Description	Price
101022594	SUPERTIF ASSY.2.2 L/H ND*	1.02
101022595	SUPERTIF ASSY.2.2 L/H ND*	0.90
101022596	SUPERTIF ASSY.2.2 L/H ND*	1.19
101022679	SUPERTIF ASSY.2.2 L/H ND*	1.01
101023017	SUPERTIF ASSY.1.1 L/H SOL ND*	1.01
101023020	SUPERTIF ASSY.2.2 L/H SOL ND*	1.01
201003415	SUPERTIF ASSY.2.2 L/H ND*	0.96

Supertif ND Single Stake Assemblies w/ Spieg




Part No.	Description	Price
101011237	SUPERTIF ASSY.2.2 L/H ND*	0.97
101022591	SUPERTIF ASSY.2.2 L/H ND*	1.03
101023024	SUPERTIF ASSY.2.2 L/H SOL ND*	1.03

Supertif NDH



Part No.	Description	Price
101011754	SUPERTIF ND HIGH 3.1 L/H SLB	0.27
101011756	SUPERTIF ND 1.6H L/H SOL	0.27
101011757	SUPERTIF ND HIGH 3.1 L/H SOL	0.27

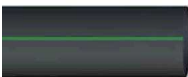
Supertif NDH Assemblies - Barpeg



Part No.	Description	Price
101022796	SUPERTIF ASSY.3.1H L/H SLB ND*	0.96
101022797	SUPERTIF ASSY.3.1H L/H SLB ND*	1.01
101023021	SUPERTIF ASSY.3.1H L/H SOL ND*	0.96
101023022	SUPERTIF ASSY.3.1H L/H SOL ND*	1.01

Polyethylene Hose and Tubing

Max-Flat Hose (PE)



Part No.	Description	Price
101000955	MAX FLAT HOSE PE, 1.365 / .055 - 500 FT	209.00
101000956	MAX FLAT HOSE PE, 1.365 / .074 - 400 FT	232.00
101000958	MAX FLAT HOSE PE, 1.595 / .042 - 150 FT	44.13
101000959	MAX FLAT HOSE PE, 1.595 / .042 - 300 FT	88.25
101000960	MAX FLAT HOSE PE, 1.595 / .042 - 600 FT	176.18
101000965	MAX FLAT HOSE PE, 2.052 / .055 - 150 FT	65.90
101000966	MAX FLAT HOSE PE, 2.052 / .055 - 450 FT	197.52
101000968	MAX FLAT HOSE PE, 3.048 / .080 - 200 FT	184.36
101000970	MAX FLAT HOSE PE, 3.996 / .106 - 130 FT	206.65

Polyethylene Flex Tubing - Rolls



Part No.	Description	Price
101013009	MICROTUBE 3/5 WHITE PES 3X5MM -500M	115.00

Polyethylene Hose and Tubing

Polyethylene Hose - Black

Part No.	Description	Price
101000953	HOSE PE, 1.049 / .070 - 500 FT	141.94
101000969	HOSE PE, .375 / .040 - 1000 FT	79.59
101000972	HOSE PE, .520 / .050 - 1000 FT	104.27
101000973	HOSE PE, .580 / .055 - 100 FT	17.51
101000974	HOSE PE, .580 / .055 - 1000 FT	122.57
101000975	HOSE PE, .580 / .055 - 500 FT	62.08
101000976	HOSE PE, .600 / .050 - 100 FT	16.87
101000977	HOSE PE, .600 / .050 - 1000 FT	114.61
101000978	HOSE PE, .600 / .050 - 500 FT	57.70
101000981	HOSE PE, .620 / .045 - 1000 FT	105.85
101000982	HOSE PE, .620 / .045 - 500 FT	53.32
101000983	HOSE PE, .830 / .055 - 100 FT	23.48
101000984	HOSE PE, .830 / .055 - 1000 FT	176.69
101000985	HOSE PE, .830 / .055 - 500 FT	88.34

Polyethylene Hose - White

Part No.	Description	Price
101038285	WHITE LD PE PIPE, 16MM / 45MIL -305M	109.48
101039027	HOSE WHITE PE, .830/.055 - 1000 FT	185.52
101039028	HOSE WHITE PE, 1.049/.070 - 500 FT	149.04
101039029	HOSE WHITE PE, 1.049/.070 - 660 FT	196.73

Polyethylene Tubing - Black



Part No.	Description	Price
101000967	TUBING PE, .250 / .050 - 500 FT	41.07
101001362	TUBING PE, .125 / .031 - 100 FT	7.56
101001363	TUBING PE, .125 / .031 - 1000 FT	36.62
101001364	TUBING PE, .170 / .040 - 100 FT	9.39
101001365	TUBING PE, .170 / .040 - 1000 FT	53.72

PVC Layflat Hose

Standard Pressure

Part No.	Description	Price
101000377	PRO-FLAT HOSE, 1 1/2" ID, .066" WALL, 30	166.75
101000378	PRO-FLAT HOSE, 2" ID, .0669 WALL, 300 FT	185.77
101000379	PRO-FLAT HOSE, 3" ID, .066 WALL, 300 FT	284.40
101000380	PRO-FLAT HOSE, 4" ID, .066 WALL, 300 FT	366.39
101000382	PRO-FLAT HOSE, 6" ID, .0948 WALL, 300 FT	720.66
101000383	PRO-FLAT HOSE, 8" ID, .1092 WALL, 300 FT	1294.93
101000384	PRO-FLAT HOSE, 10" ID, .1092 WALL, 100 F	663.99

RFR (Rondo flow regulated)

3/8" Thread



Part No.	Description	Price
201000141	R.F.R TH 3/8" BLA 23 L/H GREY	0.98
201000143	R.F.R TH 3/8" D.BLU 41 L/H GRE	0.98
201000144	R.F.R TH 3/8" BLU 30 L/H GREY	0.98
201000146	R.F.R TH 3/8" GRE 53 L/H GREY	0.98
201000148	R.F.R TH 3/8" RED 70 L/H GREY	0.98
201000150	R.F.R TH 3/8" WHI 95 L/H GREY	0.98

RFR (Rondo flow regulated)

3/8" Thread

with Anti-Insect Cup



Part No.	Description	Price
101003445	R.F.R TH 3/8" D.BLU 41 L/H GRE	1.57
101003446	R.F.R TH 3/8" WHI 95 L/H GREY	1.57
201000142	R.F.R TH 3/8" BLA 23 L/H GREY	1.57
201000145	R.F.R TH 3/8" BLU 30 L/H GREY	1.57
201000147	R.F.R TH 3/8" GRE 53 L/H GREY	1.57
201000149	R.F.R TH 3/8" RED 70 L/H GREY	1.57

Accessories for Rondo and RFR Sprinklers



Part No.	Description	Price
201000179	BLACK SPINNER FOR RONDO	0.12
201000180	GREY SPINNER FOR RFR	0.12
201000181	BLUE SPINNER FOR RONDO	0.12
201000182	GREEN SPINNER FOR RONDO	0.12
201000184	RONDO BL.W/INT.R.LIMI SPINNER	0.12
201000185	DOUBLE BRIDGE FOR RONDO	0.12
201000186	ANTI ANT FOR RONDO	0.10
201000187	RONDO MIST DEFLECTOR	0.08
201000189	180° DEFLECTOR FOR RONDO	0.08
201000238	360° DEFLECTOR FOR RONDO	0.08
201000252	RFR GR.W/INT.R.LIMI SPINNER FO	0.12

Nozzles for the RFR Mini Sprinkler



Part No.	Description	Price
201000190	DARK BLUE NOZZLE F/R.F.R.&J.F.R	0.38
201000191	GREEN NOZZLE FOR R.F.R & J.F.R -53 L/H	0.38
201000192	RED NOZZLE FOR R.F.R & J.F.R -70 L/H	0.38
201000193	WHITE NOZZLE FOR R.F.R & J.F.R -95 L/H	0.38
201000785	BLACK NOZZLE FOR R.F.R & J.F.R -23 L/H	0.38
201000786	BLUE NOZZLE FOR R.F.R & J.F.R -30 L/H	0.38

RFR Assemblies - Anti-Insect Cup, Super Hammer Stake



Part No.	Description	Price
101022565	R.F.R BLACK GREY SP.*	3.96
101022566	R.F.R BLUE GREY SP.*	3.96
101022567	R.F.R DARK BLUE GREY SP.*	3.96
101022568	R.F.R GREEN GREY SP.*	3.96
101022569	R.F.R RED GREY SP.*	3.96
101022570	R.F.R WHITE GREY SP.*	3.96

Rondo Mini-Sprinkler

Rondo Mini-Sprinkler - With Spinner (inverted applications)



Part No.	Description	Price
101003433	RONDO ULTRA CON. 51 L/H BLUE SP.D BRIDGE	0.79
101003443	RONDO ULTRA CON. 75 L/H BLUE SP.D BRIDGE	0.79
101028763	RONDO ULTRA D.BRIDGE,D.BLU 64L	0.79
201000278	RONDO ULTRA D.BRIDGE,GRE 75L/H	0.79
201005978	RONDO ULTRA D.BRIDGE,BLU 51L/H	0.79

Rondo Mini-Sprinkler

Rondo Mini-Sprinkler - With Spinner (upright applications)



Part No.	Description	Price
101003401	RONDO ULTRA D.BRIDGE,D.BLU 64L	0.79
101003411	RONDO ?3/8"XC.F 64 L/H BLACK SP.D BRIDGE	0.74
101010908	RONDO ULTRA D.BRIDGE,WHI 132L/	0.79
101022953	RONDO ULTRA D.BRIDGE,BLA 39L/H	0.79
101028802	RONDO ULTRA D.BRIDGE,D.BLU 64L	0.79
201000104	RONDO ULTRA D.BRIDGE,BLU 51L/H	0.79
201000105	RONDO ULTRA D.BRIDGE,GRE 75L/H	0.79
201000106	RONDO ULTRA D.BRIDGE,RED 102L/	0.79
201000108	RONDO ULTRA D.BRIDGE,BLA 39L/H	0.79
201000109	RONDO ULTRA D.BRIDGE,BLU 51L/H	0.79
201000110	RONDO ULTRA D.BRIDGE,GRE 75L/H	0.79
201000111	RONDO ULTRA D.BRIDGE,RED 102L/	0.79
201000112	RONDO ULTRA D.BRIDGE,WHI 132L/	0.79
201000116	RONDO ?3/8"XC.F 39 L/H BLACK SP.D BRIDGE	0.74
201000117	RONDO ?3/8"XC.F 51 L/H BLACK SP.D BRIDGE	0.74
201000118	RONDO ?3/8"XC.F 75 L/H BLACK SP.D BRIDGE	0.74
201000119	RONDO D.BRIDGE,RED 102L/H BLA	0.74
201000121	RONDO D.BRIDGE,WHI 132L/H BLA	0.74

Rondo Mini-Sprinkler Accessories

Nozzles for the Rondo Mini Sprinkler

3/8" Thread



Part No.	Description	Price
201000158	?3/8"XC.F,BLACK NOZZLE F/RONDO-39 L/H	0.13
201000159	?3/8"XC.F,BLUE NOZZLE F/RONDO-51 L/H	0.13
201000160	?3/8"XC.F,GREEN NOZZLE F/RONDO-75 L/H	0.13
201000161	?3/8"XC.F,RED NOZZLE F/RONDO-102 L/H	0.13
201000162	?3/8"XC.F,WHITE NOZZLE F/RONDO-132 L/H	0.13
201000163	?3/8"XC.F,PURPLE NOZZLE F/RONDO-174 L/H	0.13
201000164	?3/8"XC.F,YELLOW NOZZLE F/RONDO-205 L/H	0.13
201000165	?3/8"XC.F,ORANGE NOZZLE F/RONDO-298 L/H	0.13
201000770	?3/8"XC.F D.BLU NOZZLE F/RONDO	0.13
201000771	?3/8"XC.F,BROWN NOZZLE F/RONDO-254 L/H	0.13

5mm Thread



Part No.	Description	Price
201000174	TH 5MM,BLACK NOZZLE F/RONDO ULTRA-39 L/H	0.13
201000175	TH 5MM D.BLU NOZZLE F/RONDO UL	0.13
201000176	TH 5MM,BLUE NOZZLE F/RONDO ULTRA-51 L/H	0.13
201000177	TH 5MM,GREEN NOZZLE F/RONDO ULTRA-75 L/H	0.13
201000178	TH 5MM,RED NOZZLE F/RONDO-102 L/H	0.13
201000772	TH 5MM L.BLUE NOZZLE F/RONDO U	0.13
201000773	TH 5MM WHI NOZZLE F/RONDO ULTR	0.13
201000774	TH 5MM PUR NOZZLE F/RONDO ULTR	0.13
201000775	TH 5MM YEL NOZZLE F/RONDO ULTR	0.13

Press Fit



Part No.	Description	Price
201000166	CON.,BLACK NOZZLE F/RONDO ULTRA-39 L/H	0.13
201000167	CON.,BLUE NOZZLE F/RONDO ULTRA-51 L/H	0.13
201000168	CON.,GREEN NOZZLE F/RONDO ULTRA-75 L/H	0.13
201000169	CON.,RED NOZZLE F/RONDO ULTRA-102 L/H	0.13
201000170	CON.,WHITE NOZZLE F/RONDO ULTRA-132 L/H	0.13
201000171	CON.,PURPLE NOZZLE F/RONDO ULTRA-174 L/H	0.13
201000172	CON.,YELLOW NOZZLE F/RONDO ULTRA-205 L/H	0.13
201000173	CON.,ORANGE NOZZLE F/RONDO ULTRA-298 L/H	0.13
201000890	CON.,BROWN NOZZLE F/RONDO ULTRA-254 L/H	0.13



Rondo Mini-Sprinkler Accessories

Nozzles for the Rondo Mini Sprinkler

Press Fit

Part No.	Description	Price
201000922	CON. D.BLU NOZZLE F/RONDO ULTR	0.13

Rondo Mini-Sprinkler and Assemblies

Rondo Mini-Sprinkler - Anti-Insect Cup, Spike Stake



Part No.	Description	Price
101022604	RONDO ULTRA TH 5MM 30 L/H*	3.38
101022605	RONDO ULTRA TH 5MM 39 L/H*	3.38
101022606	RONDO ULTRA TH 5MM 51 L/H*	3.38
101022607	RONDO ULTRA TH 5MM 64 L/H*	3.38
101022608	RONDO ULTRA TH 5MM 75 L/H*	3.38

Rondo Mini-Sprinkler - Anti-Insect Cup, Super Hammer Stake



Part No.	Description	Price
101022601	RONDO ?3/8"XC.F 39 L/H*	3.68
101022602	RONDO ?3/8"XC.F 64 L/H*	3.68
101022603	RONDO ?3/8"XC.F 75 L/H*	3.68
101022681	RONDO ?3/8"XC.F 51 L/H*	3.68

Rondo Mini-Sprinkler - With Anti-Insect Cup



Part No.	Description	Price
101003412	RONDO D.BRIDGE,BLU 51L/H BLA S	1.33
101003421	RONDO D.BRIDGE,D.BLU 64L/H BLA	1.33
101003426	RONDO ULTRA D.BRIDGE,BLU 51L/H	1.38
101003430	RONDO ULTRA D.BRIDGE,D.BLU 64L	1.38
101003434	RONDO ULTRA D.BRIDGE,L.BLUE 30	1.38
201000128	RONDO D.BRIDGE,BLA 39L/H BLA S	1.33
201000129	RONDO D.BRIDGE,GRE 75L/H BLA S	1.33
201000130	RONDO ULTRA D.BRIDGE,GRE 75L/H	1.38
201000135	RONDO ULTRA D.BRIDGE,BLA 39L/H	1.38

Spider Assemblies (to be used w/ online dripper)



Part No.	Description	Price
101022558	2 OUT+WHITE S.PE 3X5-0.60M+BLA	1.74
101022559	2 OUT+WHITE S.PE 3X5-0.75M+BLA	1.81
101022560	4 OUT+WHITE S.PE 3X5-0.45-0.75	2.02
101022561	4 OUT+WHITE S.PE 3X5-0.60-0.90	2.26
101022598	4 OUT+WHITE S.PE 3X5-0.45M+BLA	1.88
101022599	4 OUT+WHITE S.PE 3X5-0.60M+BLA	2.02
101022600	4 OUT+WHITE S.PE 3X5-0.75M+BLA	2.16
201000062	SUPERTIF ND 3.85 L/H	0.27
201000064	SUPERTIF ND 8 L/H	0.27
201000064	SUPERTIF ND 8 L/H	2.50

Spot-Spitter

Top & Stake



Part No.	Description	Price
101001328	SPOT SPITTER, SHORT, 90, MINI FLOW, GREY	0.20
101001330	SPOT SPITTER, TOP, 160, HIGH FLOW, BLACK	0.16
101001331	SPOT SPITTER, TOP, 160, MED FLOW, DK GRN	0.16
101001332	SPOT SPITTER, TOP, 160, LOW FLOW, LT GRN	0.16
101001333	SPOT SPITTER, TOP, 160, MINI FLOW, ORANG	0.16
101001334	SPOT SPITTER, TOP, 360, MED FLOW, BLUE	0.16

Spot-Spitter Short

Horizontal Spray (HS)



Part No.	Description	Price
101001324	SPOT SPITTER, SHORT 160 MED FLOW, DK GRN	0.20
101001325	SPOT SPITTER, SHORT 160 LOW FLOW, LT GRN	0.20
101001326	SPOT SPITTER, SHORT 160 MINI FLOW, ORANG	0.20
101001327	SPOT SPITTER, SHORT, 90, LOW FLOW, BROWN	0.20
101001328	SPOT SPITTER, SHORT, 90, MINI FLOW, GREY	0.20

Spot-Spitter Spray Stakes

Standard, Down Spray (DS)



Part No.	Description	Price
101001314	SPOT SPITTER, DS, 160, HIGH FLOW, BLACK	0.30
101001315	SPOT SPITTER, DS, 160, MED FLOW, DK GRN	0.30
101001316	SPOT SPITTER, DS, 160, LOW FLOW, LT GRN	0.30
101001317	SPOT SPITTER, DS, 160, MINI FLOW, ORANGE	0.30

Standard, Horizontal Spray (HS)



Part No.	Description	Price
101001307	SPOT SPITTER, AG, 160, HIGH FLOW, BLACK	0.30
101001308	SPOT SPITTER, AG, 160, MED FLOW, DK GRN	0.30
101001309	SPOT SPITTER, AG, 160, LOW FLOW, LT GRN	0.30
101001310	SPOT SPITTER, AG, 160, MINI FLOW, ORANGE	0.30
101001311	SPOT SPITTER, AG, 360, MED FLOW, BLUE	0.30
101001312	SPOT SPITTER, AG, 90, LOW FLOW, BROWN	0.30
101001313	SPOT SPITTER, AG, 90, MINI FLOW, GREY	0.30

Spot-Spitter Tall

Down Spray (DS)



Part No.	Description	Price
101001318	SPOT SPITTER, DS, TALL, HIGH FLOW, BLACK	0.58
101001319	SPOT SPITTER, DS TALL 160 L FLOW, LT GRN	0.58
101001320	SPOT SPITTER, DS TALL MINI FLOW, ORANGE	0.58
101001329	SPOT SPITTER, STABILIZER	0.27

Horizontal Spray (HS)



Part No.	Description	Price
101001321	SPOT SPITTER, HS TALL 160 HIGH FLOW, BLK	0.58
101001322	SPOT SPITTER, HS TALL 160 L FLOW, LT GRN	0.58
101001323	SPOT SPITTER, HS TALL MINI FLOW, ORANGE	0.58
101001329	SPOT SPITTER, STABILIZER	0.27

Sprinkler Accessories

Micro Tube



Part No.	Description	Price
101003699	PE 4X7MM -75CM +4X7BL.CP	0.97
101003702	PE 4X7MM -100CM +4X7BL.CP	1.20
101013018	4X7MM PVC -60CM +4X7BL.CP 6MM M	1.43
101022575	4X7MM PVC -122CM +4X7BL.CP	1.43
101029300	4X7MM PVC -85CM +4X7BL.CP 6MM M	1.86

Sprinkler Accessories



Part No.	Description	Price
201000199	MSA #43 IN 4X7/5X8 OUT 3/8"THF BLACK PP	0.18
201000205	4X7MM BLUE BARB COUPLING	0.05
201000822	MSA #44 4X7/5X8 3/8"THF BLA PP	0.18

Stakes



Part No.	Description	Price
101022683	SUPER 4X7 STAKE+PE4X7-75CM 4X7	1.49
201000207	SUPER HAMMER STAKE - INLET 4X7	0.50
201000258	CLIP HAMMER STAKE BLACK CANTAD	0.50

Tubing - rolls



Part No.	Description	Price
101003743	FEEDER TUBE 4X7MM PVC -200M	80.00
101003744	FEEDER TUBE PE 4X7MM -200M	68.00

Super XL Sprinkler

Accessories for Super XL



Part No.	Description	Price
101003707	MSA14+PVC 9X13-120CM+9CONI-MX1	6.53
101003720	PLASTRO FIELD STAND W/O SPRINKLER	6.27
101003726	9MMCONIC MALEX12MM BARBED ADAP	0.72
101003741	PLASTRO ADAPTOR 1/2FX1/2F	0.44
201000808	RED NOZZLE FLF	0.29
201000845	NITZANIT GREEN CONNECT 12X1/2M	0.61

Super XL



Part No.	Description	Price
101003650	SUPER XL 3/8" BRO 290 L/H*	3.04
101003651	SUPER XL 3/8" ORA 341 L/H*	3.04
101003653	SUPER XL 3/8" YEL 235 L/H*	3.04
101003656	SUPER XL 1/2" YEL 235 L/H*	3.04
101003657	SUPER XL 1/2" BRO 290 L/H*	3.04
101003658	SUPER XL 1/2" ORA 341 L/H*	3.04

Tools

Goof Plugs - For Sprinklers and Drippers



Part No.	Description	Price
101003311	PLUG KATIF 2.8MM	0.09
101003314	PLUG 2MM(SUPERTIF)	0.09

Tools

Hole Punches - For Insert Fittings



Part No.	Description	Price
101001880	TOP OUTLET DRIPPER PUNCH 2.8MM	17.80
101001881	SIDE OUTLET DRIPPER PUNCH 2.8MM	15.04
101001967	BARBED DRIPPER PUNCH 2MM	15.25
101011339	TALLI INSERTER FOR 3X5MM MICROTUBE	8.96
101011340	TALLI INSERTER F/4X7 MICROTUBE	8.96
101022748	MINI DRIPPER PUNCH F/BARBED DRIPPER 2MM	2.66

Hole Punches - For PE Hose



Part No.	Description	Price
101000005	HOLE PUNCH FOR PE HOSE	7.00
101000006	HOLE PUNCH FOR PE HOSE WITH STRAP	7.80

Hole Punches - For PRO-GRIP fittings



Part No.	Description	Price
101001107	PRO GRIP, HOLE PUNCH, B400, GREEN	22.00
101001109	PRO GRIP, HOLE PUNCH, B400 FOR T6 & T7 F	22.00
101001111	PRO GRIP, HOLE PUNCH, B700 FOR T6 FITTIN	22.00
101001112	PRO GRIP, HOLE PUNCH, B700 FOR T7 FITTIN	22.00
101001121	PRO GRIP, LAY FLAT SPANNER WRENCH	7.50
101001122	PRO GRIP, LAY FLAT TEE HEX WRENCH, .312	7.50
101001123	PRO GRIP, LAY FLAT TEE HEX WRENCH, .500	7.50

Layflat Cutters



Part No.	Description	Price
101001118	LFC14 LAY FLAT CUTTER	115.00
101001119	PRO GRIP, LAY FLAT CUTTER, GREEN, 16 MM	115.00
101001120	LFC19 LAY FLAT CUTTER	115.00

Tale Inserters - For Micro Tube

Part No.	Description	Price
101011339	TALLI INSERTER FOR 3X5MM MICROTUBE	40.36
101038664	SUPER TALLI INSERTER FOR 3X5MM MICROTUBE	57.06

Tordo Mini Jet Sprayer



Part No.	Description	Price
101003367	TORNADO M.SPRINKLER TH GRE 75	1.16
101003368	TORNADO M.SPRINKLER TH RED 100	1.16
201000089	TORNADO M.SPRINKLER CON. BLA 3	1.16
201000090	TORNADO M.SPRINKLER CON. BLU 4	1.16
201000091	TORNADO M.SPRINKLER CON. GRE 7	1.16
201000092	TORNADO M.SPRINKLER CON. RED 1	1.16
201000093	TORNADO M.SPRINKLER CON. WHI 1	1.16
201000094	TORNADO M.SPRINKLER TH BLA 33	1.16
201000095	TORNADO M.SPRINKLER TH BLU 43	1.16
201000267	TORNADO M.SPRINKLER TH WHI 115	1.16



Tordo Mist Jet Sprayer



Part No.	Description	Price
101003369	TORNADO MIST TH GREEN 40 L/H	0.46
201000096	TORNADO MIST CON. BLACK 23 L/H	0.46
201000097	TORNADO MIST CON. BLUE 27 L/H	0.46
201000098	TORNADO MIST CON. GREEN 40 L/H	0.46
201000099	TORNADO MIST CON. RED 50 L/H	0.46
201000100	TORNADO MIST TH BLACK 23 L/H	0.46
201000101	TORNADO MIST TH BLUE 27 L/H	0.46
201000102	TORNADO MIST TH RED 50 L/H	0.46

Tordo Ray Jet

10/32" (5 mm) thread



Part No.	Description	Price
101003361	TORNADO R.J TH BLA 25 300°	0.28
101003363	TORNADO R.J TH GRE 55 180°	0.28
201000079	TORNADO R.J TH BLA 25 12-JET	0.28
201000080	TORNADO R.J TH BLU 34 12-JET	0.28
201000081	TORNADO R.J TH GRE 55 12-JET	0.28
201000082	TORNADO R.J TH RED 70 12-JET	0.28
201000083	TORNADO R.J TH BLU 34 300°	0.28
201000084	TORNADO R.J TH GRE 55 300°	0.28
201000085	TORNADO R.J TH BLA 25 180°	0.28
201000086	TORNADO R.J TH BLU 34 180°	0.28
201000087	TORNADO R.J TH RED 70 180°	0.28
201000088	TORNADO R.J TH RED 70 300°	0.28

Assemblies



Part No.	Description	Price
101022800	TORNADO TH12-JETS BLA PE4X7-75	2.04
101022801	TORNADO TH12-JETS RED PE4X7-75	2.04
101022826	TORNADO TH12-JETS BLU PE4X7-75	2.04
101022827	TORNADO TH12-JETS GRE PE4X7-75	2.04

T-Tape Layflat Hose

High Pressure



Part No.	Description	Price
101000998	LAYFLAT, 2.0"DIA, US, VINYL, HP, 300FT. COIL, B	370.00
101001009	LAYFLAT, 3.0"DIA, US, VINYL, HP, 300FT. COIL, B	707.00
101001015	LAYFLAT, 4.0"DIA, US, VINYL, HP, 300FT. COIL, B	921.00
101001023	LAYFLAT, 6.0"DIA, US, VINYL, HP, 300FT. COIL, B	1653.00

Standard Pressure



Part No.	Description	Price
101000993	LAYFLAT, 1.5"DIA, US, VINYL, MP, 300FT. COIL, B	107.00
101000999	LAYFLAT, 2.0"DIA, US, VINYL, MP, 300FT. COIL, B	134.00
101001010	LAYFLAT, 3.0"DIA, US, VINYL, MP, 300FT. COIL, B	240.00
101001016	LAYFLAT, 4.0"DIA, US, VINYL, MP, 300FT. COIL, B	316.00
101001943	LAYFLAT, 6.0"DIA, US, VINYL, MP, 300FT. COIL, B	555.00