

Air Vents, Check Valves & Pressure Regulators

Pressure Regulating Units



Model No.	Description	Price
32PRVU-09V2K	Regulating Unit 9 psi	9.50
32PRVU-12V2K	Regulating Unit 12 psi	9.50
32PRVU-15V2K	Regulating Unit 15 psi	9.50
32PRVU-20V2K	Regulating Unit 20 psi	9.50
32PRVU-25V2K	Regulating Unit 25 psi	9.50
32PRVU-30V2K	Regulating Unit 30 psi	9.50
32PRVU-35V2K	Regulating Unit 35 psi	9.50
32PRVU-43V2K	Regulating Unit 43 psi	9.50
32PRVU-50V2K	Regulating Unit 50 psi	9.50
32PRVU-57V2K	Regulating Unit 57 psi	9.50
32PRVU-65V2K	Regulating Unit 65 psi	9.50

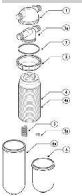
Quick Coupling Valve



Model No.	Description	Price
593039075	Quick Coupling Valve	24.00
593139075	Quick Coupling Valve Riser	8.20

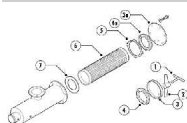
Filtration

1" and 1 1/2" Manual Disc Filter Parts



Model No.	Description	Price
25AP131199	Wrench	8.70
25AP21121-***	1" & 1 1/2" Super ring set with spine (any mesh)	55.00
25AP23113	1" & 1 1/2" Regular filter cover	41.00
25AP231131	Tightening nut	26.00
25AP231511	1 1/2" Regular and Super filter body	52.00
25AP25000101	1" Regular and Super filter body	42.00
25AP25010111	1" & 1 1/2" Super filter cover	46.00
25AP47-***	1" & 1 1/2" Regular ring set with spine (any mesh)	38.00
25AP50440011	1" & 1 1/2" Super compression spring	14.00
25AP531130	1" & 1 1/2" Regular compression spring	12.00
25AP531140	Cover o-ring	5.00

19000 Series Screen Filter Parts



Model No.	Description	Price
44E000100	Handle for 3", 4" filters	73.00
44E000218	Tightening bridge for 3" - 4" filters	44.00
44E000280	Cover for 3", 4" filter	49.00
44E000320	Cover for 8" filter	100.00
44E000340	Cover for 10" filter	121.00
44E000416-***	Filter screen 3", 4" filter (any mesh)	357.00
44E000489-***	Filter screen 6" filter (any mesh)	583.00
44E000492-***	Filter screen 10" filter (any mesh)	1,808.00
44E000930	Cover gasket for 3", 4" filter	32.00
44E000980	Cover gasket for 8" filter	133.00
44E001901	Inner gasket for 6" filter	64.00
44E001902	Gasket center piece for 8" filter	52.00
44E001903	Inner gasket for 8" filter	121.00
44E001904	Inner gasket for 10" filter	138.00
44E001905	Gasket center piece for 10" filter	71.00
44E001906	Cover gasket for 10" filter	141.00
44E003385	Inner gasket for 3", 4" filter	24.00
44E007391	Gasket center piece for 3", 4" filter	39.00
44E007392	Gasket center piece for 6" filter	38.00
44E198202-***	Filter screen 8" filter (any mesh)	1,058.00
44E806201	Cover for 6" filter	77.00



Filtration

19000 Series Screen Filter Parts

Model No.	Description	Price
44ER02004	Cover gasket for 6" filter	91.00

19000 Series Screen Filters



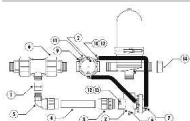
Model No.	Description	Price
23SF19806-120	6" 19000 Series Screen filter epoxy (120 mesh)	2,224.00
23SF19806-150	6" 19000 Series Screen filter epoxy (150 mesh)	2,224.00
23SF19808-120	8" 19000 Series Screen filter epoxy (120 mesh)	3,328.00
23SF19808-150	8" 19000 Series Screen filter epoxy (150 mesh)	3,328.00
23SF19903-120	3" 19000 Series Screen filter epoxy (120 mesh)	985.00
23SF19903-150	3" 19000 Series Screen filter epoxy (150 mesh)	985.00
23SF19904-120	4" 19000 Series Screen filter epoxy (120 mesh)	1,315.00
23SF19904-150	4" 19000 Series Screen filter epoxy (150 mesh)	1,315.00
23SL19803-120	3" 19000 Series Screen filter Stainless (120 mesh)	1,534.00
23SL19803-150	3" 19000 Series Screen filter Stainless (150 mesh)	1,534.00
23SL19804-120	4" 19000 Series Screen filter Stainless (120 mesh)	1,925.00
23SL19804-150	4" 19000 Series Screen filter Stainless (150 mesh)	1,925.00
23SL19806-120	6" 19000 Series Screen filter Stainless (120 mesh)	3,866.00
23SL19806-150	6" 19000 Series Screen filter Stainless (150 mesh)	3,866.00
23SL19808-120	8" 19000 Series Screen filter Stainless (120 mesh)	5,074.00
23SL19808-150	8" 19000 Series Screen filter Stainless (150 mesh)	5,074.00
23SL19810-120	10" 19000 Series Screen filter Stainless (120 mesh)	8,109.00
23SL19810-150	10" 19000 Series Screen filter Stainless (150 mesh)	8,109.00

2" Compact Disc-Kleen Filter



Model No.	Description	Price
26ASK2A1-120ACAX	2" Compact filter - 120 mesh - AC	4,933.00
26ASK2A1-120DCLAX	2" Compact filter - 120 mesh - DC	4,757.00
26ASK2A1-140ACAX	2" Compact filter - 140 mesh - AC	4,933.00
26ASK2A1-140DCLAX	2" Compact filter - 140 mesh - DC	4,757.00
26ASK2A1LF120ACAX	2" Compact filter - Low Flow - 120 mesh - AC	4,933.00
26ASK2A1LF120DCLAX	2" Compact filter - Low Flow - 120 mesh - DC	4,757.00
26ASK2A1LF140ACAX	2" Compact filter - Low Flow - 140 mesh - AC	4,933.00
26ASK2A1LF140DCLAX	2" Compact filter - Low Flow - 140 mesh - DC	4,757.00

2" Compact Disc-Kleen Filter Parts



Model No.	Description	Price
23AXF2ACDC-D	AC Backflush Controller	1,383.00
23AXF2DCL-P	DC Latching Backflush Controller	1,084.00
23GALPD	PD Gauge	461.00
25AP133499	Spine Wrench	51.00
25AP18990051	Diverter screen filter	603.00
25AP21991002	Spine Complete without Rings	210.00
25AP21991002LF	Spine Complete without Rings for Low Flow	210.00
25AP22240252	Body - Threaded Connection	168.00
25AP22340324	Complex Adapter	35.00
25AP22531225	Sliding Washer	6.10
25AP22532265	PE pipe	17.00
25AP25060224	Butterfly Nut	19.00
25AP25060226	Tightening Cylinder	37.00
25AP25110103	Gauge port nut	4.50
25AP25300216	Piston	23.00
25AP332115	2" cap	17.00
25AP333132	Filter Cover	105.00
25AP49-****S	Ring Set	114.00
25AP50060004	Gauge port seal	6.60
25AP50060008	Cone Membrane	81.00
25AP50223041	90 degree elbow	54.00
25AP50225011	1 1/4" coupling	12.00



Filtration

2" Compact Disc-Kleen Filter Parts

Model No.	Description	Price
25AP50225042	2" Male adapter	39.00
25AP50760009	Abrasion Shield (High Flow Model Only)	4.60
25AP50760028	Butterfly Nut Wrench	37.00
25AP532140	Hydraulic Seal	19.00
25AP532240	O-Ring 2-234	3.50
25AP533131	Clamp	69.00
55P1220204-B	1/4" double nipple (bag 10)	12.00
55P4694802-B	1/8" x 8mm angle fitting (bag 10)	36.00
55P4694804-B	1/4" x 8 mm angle fitting (bag 10)	45.00
55P4714804-B	8mm x 1/4" x 8 mm tee (bag 10)	45.00
61ARK12VDCL-MO	12VDC latching solenoid	204.00
61BBC-024	24VAC solenoid	160.00
61BFG2TP	2" Backflush Valve	374.00
61SF25P	1/4" finger filter	13.00

2" Disc-Kleen Filter Backflush Valve

Model No.	Description	Price
25AP5062022424	2" Plastic Backflush Valve Stem Rubber Seal	33.00
61BFG2TP	2" Plastic Backflush Valve	374.00

2" Disc-Kleen Filter Batteries



Model No.	Description	Price
26ASK2PP2***AC	2" Disc-Kleen - 2 filters (any mesh) AC Solenoid	5,956.00
26ASK2PP2***DC	2" Disc-Kleen - 2 filters (any mesh) DC Solenoid	5,956.00
26ASK2PP2***DCL	2" Disc-Kleen - 2 filters (any mesh) DCL Solenoid	6,046.00
26ASK2PP3***AC	2" Disc-Kleen - 3 filters (any mesh) AC Solenoid	8,099.00
26ASK2PP3***DC	2" Disc-Kleen - 3 filters (any mesh) DC Solenoid	8,099.00
26ASK2PP3***DCL	2" Disc-Kleen - 3 filters (any mesh) DCL Solenoid	8,227.00
26ASK2PP4***AC	2" Disc-Kleen - 4 filters (any mesh) AC Solenoid	10,498.00
26ASK2PP4***DC	2" Disc-Kleen - 4 filters (any mesh) DC Solenoid	10,498.00
26ASK2PP4***DCL	2" Disc-Kleen - 4 filters (any mesh) DCL Solenoid	10,677.00

2" Disc-Kleen Filter Battery Parts

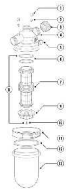


Model No.	Description	Price
25AP133499	Spine Wrench	51.00
25AP20221-***DK	Ring Set Only (any mesh)	114.00
25AP21991002	Spine Complete without Rings	210.00
25AP22240253	Body - Victaulic Connection	Call
25AP22340324	Complex Adapter	35.00
25AP22531225	Sliding Washer	6.10
25AP25060224	Butterfly Nut	19.00
25AP25060226	Tightening Cylinder	37.00
25AP25300216	Piston	23.00
25AP333132	Filter Cover	105.00
25AP333132C	Filter Cover Clear (for demo only)	105.00
25AP50060008	Cone Membrane	81.00
25AP50760009	Abrasion Shield (for High Pressure applications)	4.60
25AP50760028	Butterfly Nut Wrench	37.00
25AP532140	Hydraulic Seal	19.00
25AP532240	O-Ring 2-234	3.50
25AP533131	Clamp	69.00
27AP5B00000024	Controller Mounting Bracket	80.00



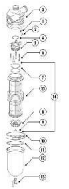
Filtration

2" Dual Manual Disc Filter Parts



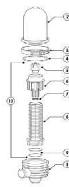
Model No.	Description	Price
25AP21990020	Complete spine assy without rings (any mesh)	59.00
25AP25000205	Threaded body	157.00
25AP25060211	Twin fixing nut	7.30
25AP25110103	Gauge port nut	4.50
25AP332115	2" cap	17.00
25AP333132	Filter cover	105.00
25AP49-***S	Ring set only (any mesh)	114.00
25AP49-***SDS	Complete spine assy with rings (any mesh)	171.00
25AP50032238	Detachable Spine O-Ring 2-238	3.50
25AP50060004	Gauge port seal	6.60
25AP50540212	Ball valve 1/2"	26.00
25AP532140	Cover gasket	19.00
25AP533124	Twin fastening screw	4.20
25AP533131	Clamp	69.00
25AP595177075	3/4" plug	1.30

2" Super Manual Disc Filter Parts



Model No.	Description	Price
25AP21990020	Complete spine assy without rings (any mesh)	59.00
25AP232211	Threaded body	142.00
25AP25030210	Detachable spine base	34.00
25AP25060211	Twin fixing nut	7.30
25AP25110103	Gauge port nut	4.50
25AP333132	Filter cover	105.00
25AP49-***S	Ring set only (any mesh)	114.00
25AP49-***SDS	Complete spine assy with rings (any mesh)	171.00
25AP50060004	Gauge port seal	6.60
25AP50401012	Twin fastening screw	1.80
25AP50540212	Ball valve 1/2"	26.00
25AP532140	Cover gasket	19.00
25AP532141	Spine seat o-ring	4.40
25AP532240	2-234 O Ring	3.50
25AP533124	Fastening bolts	4.20
25AP533131	Clamp	69.00

3" Angle Disc Filter Parts



Model No.	Description	Price
25AP1341-***	Complete spine assy with rings (any mesh)	465.00
25AP13701001	Body, Cover, Clamp (old style)	558.00
25AP21990043	Complete spine assy without rings	240.00
25AP22371001	Body Grooved (new style, 120 degree)	243.00
25AP2341-***	Ring set only (any mesh)	265.00
25AP25010601	Filter Cover (new style)	310.00
25AP25020302	Spine cap	160.00
25AP25060302	Tightening nut	18.00
25AP25060304	Spine cap	44.00
25AP25070308	Cone Flange	13.00
25AP25100325	Loose Flange	47.00
25AP33433	Filter cover (old style)	161.00
25AP50032220	O-ring	4.70
25AP50052013	3" Gasket	16.00
25AP50420060	Clamp (new style)	145.00
25AP50540212	Ball valve 1/2"	26.00
25AP534141	O-ring	4.10
25AP534331	Clamp (old style)	123.00
25AP534341	Hydraulic cover seal	19.00

3" Disc-Kleen Filter Backflush Valve

Model No.	Description	Price
25AP50032246	O-Ring for Female Threaded Adapter	7.00



Filtration

3" Disc-Kleen Filter Backflush Valve

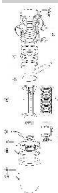
Model No.	Description	Price
25AP5060442408	3" Plastic Backflush Valve Stem Rubber Seal	33.00
61BFG3PSK	3" Plastic Backflush Valve	649.00

3" Disc-Kleen Filter Batteries



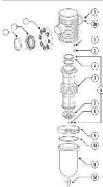
Model No.	Description	Price
26ASK3PP3***AC	3" Disc-Kleen - 3 filters (any mesh) AC Solenoid	12,105.00
26ASK3PP3***DC	3" Disc-Kleen - 3 filters (any mesh) DC Solenoid	12,105.00
26ASK3PP3***DCL	3" Disc-Kleen - 3 filters (any mesh) DCL Solenoid	12,232.00
26ASK3PP4***AC	3" Disc-Kleen - 4 filters (any mesh) AC Solenoid	15,406.00
26ASK3PP4***DC	3" Disc-Kleen - 4 filters (any mesh) DC Solenoid	15,406.00
26ASK3PP4***DCL	3" Disc-Kleen - 4 filters (any mesh) DCL Solenoid	15,781.00
26ASK3PP5***AC	3" Disc-Kleen - 5 filters (any mesh) AC Solenoid	18,962.00
26ASK3PP5***DC	3" Disc-Kleen - 5 filters (any mesh) DC Solenoid	18,962.00
26ASK3PP5***DCL	3" Disc-Kleen - 5 filters (any mesh) DCL Solenoid	19,332.00

3" Disc-Kleen Filter Battery Parts



Model No.	Description	Price
25AP133499	Spine wrench	51.00
25AP20221-***DK	Ring set only (any mesh)	114.00
25AP21991002	Spine complete without rings	210.00
25AP22340324	Spine adapter with o-rings	35.00
25AP22341001	Body - old style	691.00
25AP22341004	Body - new style	580.00
25AP25060224	Butterfly nut	19.00
25AP25060226	Tightening cylinder	37.00
25AP332115	2" cap	17.00
25AP333132	Filter Cover	105.00
25AP333132C	Filter Cover Clear (for demo only)	105.00
25AP50760028	Butterfly nut wrench	37.00
25AP532140	Cover O-ring	19.00
25AP533131	Clamp	69.00
27AP5B00000024	Controller Mounting Bracket	80.00

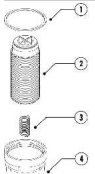
3" Twin Manual Disc Filter Parts



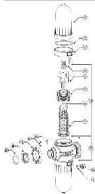
Model No.	Description	Price
25AP21990020	Complete spine assy without rings (any mesh)	59.00
25AP22020022	Filter cover	105.00
25AP233114	Body grooved	581.00
25AP25000302	Body flanged	616.00
25AP25060211	Twin fixing nut	7.30
25AP25070308	Cone Flange	13.00
25AP25100325	Loose Flange	47.00
25AP25110103	Gauge port nut	4.50
25AP49-***S	Ring set only (requires 2 sets) (any mesh)	114.00
25AP49-***SDS	Complete spine assy with rings (any mesh)	171.00
25AP50032238	Detachable Spine O-Ring 2-238	3.50
25AP50052013	3" Gasket	16.00
25AP50060004	Gauge port seal	6.60
25AP50540212	Ball valve 1/2"	26.00
25AP532140	Cover gasket	19.00
25AP533124	Twin fastneing screw	4.20
25AP533131	Clamp	69.00

Filtration

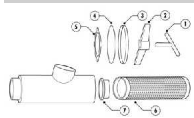
3/4" Manual Disc Filter Parts

	Model No.	Description	Price
	25AP230112	Filter body	20.00
	25AP23013	Filter cover	13.00
	25AP46-***	Ring set with spine (any mesh)	16.00
	25AP530130	Compression spring	3.50
	25AP530140	Cover o-ring	3.50


4" and 6" Twin Manual Disc Filter Parts

	Model No.	Description	Price
	25AP1341-***	Complete Spine Assembly with Rings (any mesh)	465.00
	25AP14411001	4" Twin Body with Cover Clamp	1,178.00
	25AP21990043	Complete Spine Assembly without Rings	240.00
	25AP22450001	4" Twin Body	820.00
	25AP22460001	6" Twin Body	820.00
	25AP2341-***	Ring set only (any mesh)	265.00
	25AP25010601	Filter cover	310.00
	25AP25020302	Spine	160.00
	25AP25060302	Tightening nut	18.00
	25AP25060304	Spine cap	44.00
	25AP25070402	4" Twin Flange Clamp Ring	18.00
	25AP25070602	6" Twin Flange Clamp Ring	28.00
	25AP25100425	4" Twin Flange	62.00
	25AP25100625	6" Twin Flange	129.00
	25AP25110103	Gauge Port nut	4.50
	25AP50032220	O-ring	4.70
	25AP50032311	O-ring	4.80
	25AP50052014	4" Twin Gasket	18.00
	25AP50052016	6" Twin Gasket	28.00
	25AP50060004	Gauge Port seal	6.60
	25AP50420060	Clamp	145.00
	25AP50540112	Drain Tap Valve 3/4"	26.00
	25AP534341	Hydraulic cover seal	19.00

4" Back-Up Screen Filter Parts

	Model No.	Description	Price
	44E000100	Handle	73.00
	44E000218	Bridge	44.00
	44E000280	Top Cover Plate	49.00
	44E000433-***	Filter Screen (any mesh)	461.00
	44E007380	Gasket	26.00
	44E007389	Centering piece	18.00
	44E407385	Inner gasket	32.00

Accessories

	Model No.	Description	Price
	15CONT-8	Control Tubing (1000' roll)	133.00
	15CONT8C10	Control Tubing (10' roll)	1.50
	15CONT8C100	Control Tubing (100' roll)	15.00
	15CONT8C50	Control Tubing (50' roll)	6.80
	6809020-100	Pressure gauge 0-100 psi	63.00
	6809020-160	Pressure gauge 0-160 psi	63.00
	6809020-30	Pressure gauge 0-30 psi	63.00

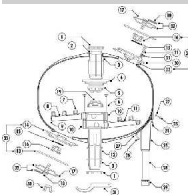
Filtration

AGF Media Filter Batteries



Model No.	Description	Price
27AGF48	AGF 48" Tank only	5,042.00
27AGF4802PP	AGF 2 filters 24VAC	14,095.00
27AGF4802PP-12DC	AGF 2 Filters 12VDC	14,095.00
27AGF4802PP-12DCL	AGF 2 Filters 12VDCL	14,285.00
27AGF4803PP	AGF 3 filters 24VAC	21,144.00
27AGF4803PP-12DC	AGF 3 Filters 12VDC	21,144.00
27AGF4803PP-12DCL	AGF 3 Filters 12VDCL	21,333.00
27AGF4804PP-S	AGF 4 filters 24VAC	28,191.00
27AGF4804PP-S12DC	AGF 4 Filters 12VDC	28,191.00
27AGF4804PP-S12DCL	AGF 4 Filters 12VDCL	28,382.00
27AGF4804PP-T	AGF 4 filters 24VAC	29,937.00
27AGF4804PP-T12DC	AGF 4 Filters 12VDC	29,937.00
27AGF4804PP-T12DCL	AGF 4 Filters 12VDCL	30,126.00
27AGF4805PP-T	AGF 5 filters 24VAC	36,947.00
27AGF4805PP-T12DC	AGF 5 Filters 12VDC	36,947.00
27AGF4805PP-T12DCL	AGF 5 Filters 12VDCL	37,136.00
27AGF4806PP-T	AGF 6 filters 24VAC	43,372.00
27AGF4806PP-T12DC	AGF 6 Filters 12VDC	43,372.00
27AGF4806PP-T12DCL	AGF 6 Filters 12VDCL	43,562.00
27AGF4807PP-T	AGF 7 filters 24VAC	51,274.00
27AGF4807PP-T12DC	AGF 7 Filters 12VDC	51,274.00
27AGF4807PP-T12DCL	AGF 7 Filters 12VDCL	51,464.00
27AGF4808PP-T	AGF 8 filters 24VAC	63,211.00
27AGF4808PP-T12DC	AGF 8 Filters 12VDC	63,211.00
27AGF4808PP-T12DCL	AGF 8 Filters 12VDCL	63,399.00
27AGF4810PP-H	AGF 10 filters 24VAC	72,288.00
27AGF4810PP-T12DC	AGF 10 Filters 12VDC	72,288.00
27AGF4810PP-T12DCL	AGF 10 Filters 12VDCL	72,477.00
27AGF4812PP-H	AGF 12 filters 24VAC	104,696.00
27AGF4812PP-HDC	AGF 12 Filters 12VDC	104,696.00
27AGF4812PP-HDCL	AGF 12 Filters 12VDCL	104,887.00
27AGF4815PP-H	AGF 15 filters 24VAC	115,125.00
27AGF4815PP-HDC	AGF 15 Filters 12VDC	115,125.00
27AGF4815PP-HDCL	AGF 15 Filters 12VDCL	115,313.00

AGF Media Filter Battery Parts



Model No.	Description	Price
25AP50032235	O-ring	6.50
27AP22480022	AGF Upper cover complete	111.00
27AP22480032	AGF Lower cover complete	111.00
27AP22480052	Upper diffuser	27.00
27AP22480054	Lower diffuser	25.00
27AP22480056	Bridge complete	28.00
27AP28200010	Upper sealing nut	21.00
27AP28200011	Lower plug assy	21.00
27AP28200012	Locking nut	21.00
27AP28200014	Inlet	63.00
27AP28200016	Outlet	108.00
27AP28200018	Distributon plate	32.00
27AP28200020	Drum	68.00
27AP28200026	End Cup	1.80
27AP28200028	Pin	1.40
27AP28200030	Mushrom	1.40
27AP28200036	Bridge	21.00
27AP28200038	Tightening screw	11.00
27AP28200040	Leg housing	103.00
27AP28200046	Vacuum release	1.80
27AP28200050	Base cup	7.80
27AP28200322	Upper cover	83.00




Filtration

AGF Media Filter Battery Parts

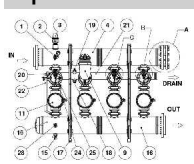
Model No.	Description	Price
27AP28200324	Lower cover	83.00
27AP28200340	Lower plug	15.00
27AP50032310	O-ring	3.50
27AP50050548	Cover seal	39.00
27AP50060482	Seal	5.70
27AP50400018	Spring	14.00
27AP50403830	W 3/8" x 1 1/4" screw	25.00
27AP50403840	W 3/8" x 1 1/2" screw	1.70
27AP50409138	3/8" washer	1.70
27AP50501400	Leg	240.00
27AP50760021	Locking nut wrench	34.00
27AP50760022	Lower drain plug tool	33.00
27AP50760248	Handle	25.00

Apollo Disc-Kleen Filter Batteries



Model No.	Description	Price
26ASK3APP4***AC	Apollo - 4 Angle (any mesh) AC Solenoid	19,900.00
26ASK3APP4***DC	Apollo - 4 Angle (any mesh) DC Solenoid	19,900.00
26ASK3APP4***DCL	Apollo - 4 Angle (any mesh) DCL Solenoid	20,076.00
26ASK4PP3***AC	Apollo - 3 Twin (any mesh) AC Solenoid	22,118.00
26ASK4PP3***DC	Apollo - 3 Twin (any mesh) DC Solenoid	22,118.00
26ASK4PP3***DCL	Apollo - 3 Twin (any mesh) DCL Solenoid	22,259.00
26ASK4PP4***AC	Apollo - 4 Twin (any mesh) AC Solenoid	33,167.00
26ASK4PP4***DC	Apollo - 4 Twin (any mesh) DC Solenoid	33,167.00
26ASK4PP4***DCL	Apollo - 4 Twin (any mesh) DCL Solenoid	33,343.00
26ASK4PP5***AC	Apollo - 5 Twin (any mesh) AC Solenoid	41,352.00
26ASK4PP5***DC	Apollo - 5 Twin (any mesh) DC Solenoid	41,352.00
26ASK4PP5***DCL	Apollo - 5 Twin (any mesh) DCL Solenoid	41,567.00
26ASK4PP6***AC	Apollo - 6 Twin (any mesh) AC Solenoid	47,000.00
26ASK4PP6***DC	Apollo - 6 Twin (any mesh) DC Solenoid	47,000.00
26ASK4PP6***DCL	Apollo - 6 Twin (any mesh) DCL Solenoid	47,284.00
26ASK4PP7***AC	Apollo - 7 Twin (any mesh) AC Solenoid	54,045.00
26ASK4PP7***DC	Apollo - 7 Twin (any mesh) DC Solenoid	54,045.00
26ASK4PP7***DCL	Apollo - 7 Twin (any mesh) DCL Solenoid	54,344.00
26ASK4PP8***AC	Apollo - 8 Twin (any mesh) AC Solenoid	65,100.00
26ASK4PP8***DC	Apollo - 8 Twin (any mesh) DC Solenoid	65,100.00
26ASK4PP8***DCL	Apollo - 8 Twin (any mesh) DCL Solenoid	65,474.00

Apollo Disc-Kleen Filter Battery Parts



Model No.	Description	Price
-	Blind Flange	Call
-	Drain Manifold	Call
-	Gasket for Blind Flange	Call
-	Inlet Manifold	Call
-	Outlet Manifold	Call
15CONT8C50	8mm Control Tube (50' Roll)	6.80
25A30-120	2" Command Filter	412.00
25AP13761***	Apollo 3" Angle Filter	2,717.00
25AP14461***	Apollo 4" Twin Filter	5,400.00
25AP22530512	1/2" Vacuum Breaker on Drain Manifold	42.00
25AP22531001	Plastic Support Leg for 10" Inlet/Outlet Manifolds	677.00
25AP22531210	Plastic Support Leg for 12" Inlet/Outlet Manifolds	731.00
25AP225403414	Pressure Gauge Assembly	192.00
25AP22541230	Mounting Bracket for Backflush Controller	90.00
25AP50402139	7/8" Bolt for Blind Flange	18.00
25AP50408017	7/8" Nut for Blind Flang	6.80
25AP50409017	7/8" Washer for Blind Flange	1.60
25AP50480222	Extension for Combination Air Vent	40.00
25AP50500116	12mm Soft Control Tube (per per foot)	2.00

Filtration

Apollo Disc-Kleen Filter Battery Parts

Model No.	Description	Price
25AP50780432	Plastic Elbow 12mm x 3/8" M Thread for Relay	6.80
25AP50780433	Plastic Tee 12mm x 3/8" M for Relay	8.10
44VIC04	4" Victaulic Coupling	48.00
44VICCP04	4" Victaulic Cap	22.00
55P1210400-B	1/4" Plug (Bag 10)	7.00
55P4694802-B	Plastic Elbow 8mm x 1/8" M for Solenoid & Relay (Bag 10)	36.00
55P4714804-B	Plastic Male Branch Tee 8mm x 1/4" x 8mm (Bag 10)	45.00
595177100	1" Plug	1.70
61BBC-024	24VAC Normally Closed Solenoid	160.00
61BFG4GPG-DM	4" Plastic Backflush Valve	730.00
61PIL25300	Plastic Hydraulic Relay Accelerator	144.00
61SF25P	Plastic Finger Filter	13.00
62SBV100	1" Ball Valve	51.00
65ARIB2PP	2" Combination Air Vent	174.00

Apollo Disc-Kleen Filter Parts



Model No.	Description	Price
25AP20334-***	Ring Set Only	286.00
25AP20334-***	Ring Set Only	286.00
25AP21991040	Spine Assembly w/out Rings	1,238.00
25AP21991040	Spine Assembly w/out Rings	1,238.00
25AP22000402	4" Twin Body	571.00
25AP22371011	3" Angle Body	289.00
25AP25010602	Filter Cover	339.00
25AP25010602	Filter Cover	339.00
25AP25110103	Gauge Port Nut	4.50
25AP25110103	Gauge Port Nut	4.50
25AP50022355	Spine Seat O-Ring	5.70
25AP50022355	Spine Seat O-Ring	5.70
25AP50032311	O-Ring for 3/4" Ball Valve	4.80
25AP50060004	Gauge Port Seal	6.60
25AP50060004	Gauge Port Seal	6.60
25AP50420060	Clamp	145.00
25AP50420060	Clamp	145.00
25AP50540112	3/4" Ball Valve	26.00
25AP50540212	1/4" x 1/2" Ball Valve	26.00
25AP534341	Cover Gasket	19.00
25AP534341	Cover Gasket	19.00

Backflush Controllers



Model No.	Description	Price
23AXF12ACDCDCLD	12 station backflush controller	2,617.00
23AXF12DCLSP	12 station backflush controller w/solar panel	3,482.00
23AXF2ACDC-D	2 station backflush controller	1,383.00
23AXF2DCL-P	2 station backflush controller with battery	1,084.00
23AXF3ACDC-D	3 station backflush controller	1,636.00
23AXF3DCLSP	3 station backflush controller w/solar panel	2,519.00
23AXF4ACDC-D	4 station backflush controller	1,886.00
23AXF4DCLSP	4 station backflush controller w/solar panel	2,758.00
23AXF8ACDC-D	8 station backflush controller	2,133.00
23AXF8DCLSP	8 station backflush controller w/solar panel	3,010.00
23AXSS-2X	1 station backflush controller	520.00
23BATT-7	Battery	189.00
23GALPD	Murphy PD Gauge	461.00
23SP5	Solar panel	507.00
23SP5BRKT	Solar panel bracket	206.00

Backflush Valves

Model No.	Description	Price
61BFG2GT98	2" Backflush Valve Epoxy Media	372.00



Filtration


Backflush Valves

Model No.	Description	Price
61BFG2TP	2" Backflush Valve Disc-Kleen Plastic	374.00
61BFG3G	3" Backflush Valve 36" Epoxy	614.00
61BFG3GP	3" Backflush Valve 30" Epoxy	529.00
61BFG3GP	3" Backflush Valve Angle	529.00
61BFG3PSK	3" Backflush Valve Disc-Kleen	649.00
61BFG4G	4" Backflush Valve 48" Epoxy	899.00
61BFG4GP	4" Backflush Valve AGF	730.00
61BFG4GPG-DM	4" Galaxy & Apollo Backflush Valve w/out manifolds	730.00

Circulating Screen Filter Automation Kits


Model No.	Description	Price
22AUTOKIT1.5DCL	2" - 6" Circulating Screen filter automation kit	1,346.00
22AUTOKIT2DCL	8" and 10" Circulating Screen filter automation kit	1,396.00

Circulating Screen Filter Parts



Model No.	Description	Price
44E000100	Handle for 2"-4" filters	73.00
44E000216	Tightening bidge for 2" filter	44.00
44E000218	Tightening bridge for 3"-4" filter	44.00
44E000482-***	Filter screen 2" (any mesh)	392.00
44E000483-***	Filter screen 3" (any mesh)	440.00
44E000484-***	Filter screen 4" (any mesh)	650.00
44E000486-***	Filter screen 6" (any mesh)	814.00
44E000487-***	Filter screen 8" (any mesh)	1,965.00
44E000488-***	Filter screen 10" (any mesh)	2,629.00
44E000582	Circulation plate 2" filter	111.00
44E000583	Circulation plate 3" filter	162.00
44E000584	Circulation plate 4" filter	200.00
44E000586	Circulation plate 6" plate	321.00
44E000587	Circulation plate 8" filter	524.00
44E000588	Circulation plate 10" filter	647.00
44E000820	Inner gasket for 2" filter	14.00
44E000830	Inner gasket for 3", 4" filter	26.00
44E000860	Inner gasket for 6" filter	44.00
44E000920	Cover gasket for 2" filter	20.00
44E000930	Cover gasket for 3", 4" filter	32.00
44E000960	Cover gasket for 6" filter	91.00
44E001281	Cover for 3"-4" filter	56.00
44E007391	Centering piece 3", 4" filters	39.00
44E007392	Centering piece 6" filter	38.00
44E008260	Cover for 2" filter	46.00
44E806200	Cover for 6" filter	101.00
44E808001	Cover for 8"-10" filter	221.00
44ER05026	Inner gasket for 8", 10" filter	65.00
44ER06072	Cover gasket for 8", 10" filters	162.00
62SBV150	Ball valve 1 1/2"	59.00

Circulating Screen Filters



Model No.	Description	Price
22ASF10FL-120	10" Circulating Screen filter (120 mesh)	7,593.00
22ASF10FL-150	10" Circulating Screen filter (150 mesh)	7,593.00
22ASF2FL-120	2" Circulating Screen filter (120 mesh)	925.00
22ASF2FL-150	2" Circulating Screen filter (150 mesh)	925.00
22ASF3FL-120	3" Circulating Screen filter (120 mesh)	1,186.00
22ASF3FL-150	3" Circulating Screen filter (150 mesh)	1,186.00
22ASF4FL-120	4" Circulating Screen filter (120 mesh)	1,695.00
22ASF4FL-150	4" Circulating Screen filter (150 mesh)	1,695.00
22ASF6FL-120	6" Circulating Screen filter (120 mesh)	3,308.00
22ASF6FL-150	6" Circulating Screen filter (150 mesh)	3,308.00
22ASF8FL-120	8" Circulating Screen filter (120 mesh)	5,444.00



Filtration

Circulating Screen Filters

Model No.	Description	Price
22ASF8FL-150	8" Circulating Screen filter (150 mesh)	5,444.00

Epoxy Coated Steel Media Filter Back-up Screen Filter

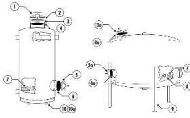
Model No.	Description	Price
23MFBS4-120	Back-up screen filter for 48" tanks - 120 mesh	1,286.00

Epoxy Coated Steel Media Filter Batteries



Model No.	Description	Price
23MFBS1602	Epoxy Media 2 - 16" tanks	4,675.00
23MFBS2002	Epoxy Media 2 - 20" tanks	5,185.00
23MFBS2003	Epoxy Media 3 - 20" tanks	7,487.00
23MFBS2402	Epoxy Media 2 - 24" tanks	6,183.00
23MFBS2403	Epoxy Media 3 - 24" tanks	8,599.00
23MFBS3002P	Epoxy Media 2 - 30" tanks	9,042.00
23MFBS3003P	Epoxy Media 3 - 30" tanks	12,321.00
23MFBS3602P	Epoxy Media 2 - 36" tanks	10,927.00
23MFBS3603	Epoxy Media 3 - 36" tanks	16,256.00
23MFBS4802	Epoxy Media 2 - 48" tanks	15,315.00
23MFBS4803	Epoxy Media 3 - 48" tanks	21,682.00
23MFBS4804	Epoxy Media 4 - 48" tanks	29,285.00
23MFBT4804	Epoxy Media 4 - 48" tanks T Configuration	30,762.00
23MFBT4805	Epoxy Media 5 - 48" tanks T Configuration	37,343.00
23MFBT4806	Epoxy Media 6 - 48" tanks T Configuration	46,464.00
23MFBT4807	Epoxy Media 7 - 48" tanks T Configuration	54,024.00
23MFBT4808	Epoxy Media 8 - 48" tanks T Configuration	61,437.00

Epoxy Coated Steel Media Filter Battery Parts



Model No.	Description	Price
44E000100	Handle for 16", 20" and 24" tanks	73.00
44E000218	Bridge for 16", 20", 24" tanks	44.00
44E000280	Top Cover Plate for 16", 20", 24" tanks	49.00
44E001340	Side Port Gasket for 16" tank	19.00
44E004365	Side Port Gasket for 20"-48" tanks	19.00
44E004367	Rubber leg holder for 16", 20" tanks	19.00
44E004368	Rubber leg holder for 24" tank	19.00
44E004369	Rubber leg holder for 30", 36", 48" tanks	22.00
44E004380	Gasket Top Port for 16", 20", 24" tanks	37.00
44E004381	Gasket Top Port for 30", 36", 48" tanks	37.00
44E400240	Side Port Cover for 16" tank	50.00
44E400260	Side Port Cover for 20", 24", 30", 36", 48" tank	51.00
44E400400	Mushroom with base	24.00
44E400720	Rubber base	5.60
44E401000	Top Cover Plate for 30", 36", 48" tanks	49.00

Epoxy Coated Steel Media Filter Tanks



Model No.	Description	Price
23MF16C	16" tank	1,215.00
23MF20C	20" tank	1,491.00
23MF24C	24" tank	1,903.00
23MF30	30" tank	2,906.00
23MF36G	36" tank	3,480.00
23MF48G	48" tank	4,720.00

Filtration

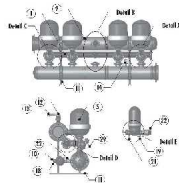
Fittings



Model No.	Description	Price
44NIPVS02	Grooved x slip PVC nipple 4" length	16.00
44NIPVS03	Grooved x slip PVC nipple 4" length	31.00
44NIPVS04	Grooved x slip PVC nipple 4" length	37.00
44NIPVS06	Grooved x slip PVC nipple 6" length	85.00
44NIPVS08	Grooved x slip PVC nipple 8" length	155.00
44NIPVS10	Grooved x slip PVC nipple 12" length	155.00
44NIPVS12	Grooved x slip PVC nipple 15" length	157.00
44SEAL02	Grooved coupling seal 2"	17.00
44SEAL03	Grooved coupling seal 3"	22.00
44SEAL04	Grooved coupling seal 4"	28.00
44SEAL06	Grooved coupling seal 6"	39.00
44SEAL08	Grooved coupling seal 8"	53.00
44SEAL10	Grooved coupling seal 10"	69.00
44SEAL12	Grooved coupling seal 12"	81.00
44SEALSA03	Gasket used with 44VIC/FL3	21.00
44SEALSA04	Gasket used with 44VIC/FL4	27.00
44SEALSA06	Gasket used with 44VIC/FL6	33.00
44SEALSA08	Gasket used with 44VIC/FL8	70.00
44SEALSA10	Gasket used with 44VIC/FL10	74.00
44SEALSA12	Gasket used with 44VIC/FL12	79.00
44SNIP2VT	Grooved x threaded adapter	37.00
44SNIP2X4	Steel nipple threaded 4" length	17.00
44VIC/FL10	Grooved X flanged metal split adapter 10" with gasket	395.00
44VIC/FL12	Grooved X flanged metal split adapter 12" with gasket	668.00
44VIC/FL3	Grooved X flanged metal split adapter 3" with gasket	129.00
44VIC/FL4	Grooved X flanged metal split adapter 4" with gasket	167.00
44VIC/FL6	Grooved X flanged metal split adapter 6" with gasket	229.00
44VIC/FL8	Grooved X flanged metal split adapter 8" with gasket	332.00
44VIC02	Grooved coupling with seal 2"	28.00
44VIC03	Grooved coupling with seal 3"	35.00
44VIC04	Grooved coupling with seal 4"	48.00
44VIC06	Grooved coupling with seal 6"	90.00
44VIC08	Grooved coupling with seal 8"	140.00
44VIC10	Grooved coupling with seal 10"	325.00
44VIC12	Grooved coupling with seal 12"	366.00

Galaxy Disc-Kleen Filter Battery Parts (Polypropylene)

Model No.	Description	Price
-	4" Drain Manifold	Call
-	Ball Valve O-Ring	Call
-	Inlet Manifold	Call
-	Lifting Hook	Call
-	Outlet Manifold	Call
-	Support Leg	Call
15CONT8C50	8mm Control Tube (50' roll)	6.80
25A49-120SDS	2" Command Filter	428.00
25AP133499	Spine wrench	51.00
25AP14941001	Cover, Clamp, Housing Assembly	3,645.00
25AP20221-***DK	Ring set only (any mesh)	114.00
25AP21991002	Spine assy complete without rings	210.00
25AP22491001	Filter housing	1,994.00
25AP22530001	Pressure Gauge Assembly	Call
25AP22530040	Filter cover	1,542.00
25AP22530042	Clamp assembly	793.00
25AP22530425	4" Flange Assembly	98.00
25AP22530512	1/2" Vacuum Breaker on Drain Manifold	Call
25AP22531213	Plastic Cap for Command Filter 3/8" F Port	41.00
25AP22531225	Sliding Washer	6.10
25AP22534043	Plug for Drain Manifold	51.00



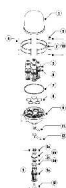
Filtration

Galaxy Disc-Kleen Filter Battery Parts (Polypropylene)

Model No.	Description	Price
25AP25060224	Butterfly nut	19.00
25AP25060226	Tightening cylinder	37.00
25AP25300216	Piston	23.00
25AP50060008	Cone Membrane	81.00
25AP50060012	Seal	51.00
25AP50060014	O-Ring Flat Seal	3.10
25AP50403409	Stainless steel bolt	16.00
25AP50408140	Brass nut	13.00
25AP50420042	Clamp (half)	363.00
25AP50480222	Extension for Combination Air Vent	40.00
25AP50500116	12mm Soft Control Tube	2.00/ft
25AP50540009	1/4" Ball Valve	Call
25AP50540118	2" Ball Valve	Call
25AP50760009	Abrasion Shield	4.60
25AP50760028	Butterfly nut wrench	37.00
25AP50780432	Plastic Elbow 12mm x 3/8" M Thread	6.80
25AP50780433	Plastic Tee 12mm x 3/8" M for Relay	8.10
44VIC04	4" Victaulic Coupling	48.00
44VICCP04	4" Victaulic Coupling	22.00
55P1030404-B	1/4" x 1/4" Threaded Coupler	19.00
55P4694802-B	Plastic Elbow 8mm x 1/8" M for Solenoid/Relay (bag 10)	36.00
55P4694804-B	Plastic Elbow 8mm x 1/4" M (bag 10)	36.00
595177100	1" Plug	1.70
61BBC-024	24VAC Normally Closed Solenoid	160.00
61BFG4GPG-DM	4" Plastic Backflush Valve	730.00
61PIL25300	Plastic Hydraulic Relay Accelerator	144.00
65ARIB2PP	2" Combination Air Vent	174.00

Galaxy Disc-Kleen Filter Parts (Stainless Steel & Aluminum)

Model No.	Description	Price
25AP133499	Spine wrench	51.00
25AP21991002	Spine Assy Complete w/out Rings	210.00
25AP22530044	Clamp Assembly for Aluminum	386.00
25AP22531225	Sliding Washer	6.10
25AP22532444L	Clamp Assembly for Stainless Steel	368.00
25AP25060224	Butterfly nut	19.00
25AP25060226	Tightening cylinder	37.00
25AP25300216	Piston	23.00
25AP25300406	Seal Support Ring	26.00
25AP49-***S	Ring Set Only	114.00
25AP50031043	O-Ring Flat Seal for Stainless	5.90
25AP50032243	O-Ring Flat Seal for Aluminum	9.50
25AP50032461	Seal for Aluminum Unit	34.00
25AP50060008	Cone Membrane	81.00
25AP50060011	Seal for Stainless Steel Unit	55.00
25AP50350001AHT	Filter Housing for Aluminum	2,620.00
25AP50350003AHT	Filter Cover for Aluminum	1,900.00
25AP50360013	Filter Cover for Stainless Steel	1,931.00
25AP50360111	Filter Housing for Stainless Steel	3,800.00
25AP50400140	SS Bolt for Aluminum Unit	27.00
25AP50400150	Bolt for Stainless Steel Unit	27.00
25AP50408140	Brass Nut	13.00
25AP50420453G	Clamp Half for Aluminum	93.00
25AP50421444L	Clamp Half for Stainless Steel	86.00
25AP50760009	Abrasion Shield	4.60
25AP50760028	Butterfly nut wrench	37.00



Filtration

Hydrocyclone Automatic Flushing Kits

Model No.	Description	Price
24HCAUTOKIT2-1DCL	2" Auto Flush Kit for 8" & 12" Hydrocyclone, DCL controller	1,396.00
24HCAUTOKIT3-1DCL	3" Auto Flush Kit for 16", 20" & 24" Hydrocyclone, DCL controller	1,499.00

Hydrocyclone Parts

Model No.	Description	Price
24E545950	Rubber Insert	77.00
24E550952	Rubber Insert	248.00
24E560952	Rubber Insert	293.00
24HCTESTER	Hydrocyclone Tester Kit	1,214.00
44Z209	Hydrocyclone Nut & Washer For Tester Kit	26.00
44Z400409	Hydrocyclone Glass Tube	29.00

Hydrocyclone Sand Separators



Model No.	Description	Price
24HC12F6	12" Hydrocyclone	1,801.00
24HC16F6	16" Hydrocyclone	2,247.00
24HC20F8	20" Hydrocyclone	3,020.00
24HC24F8	24" Hydrocyclone	3,492.00
24HC3	3" Hydrocyclone	377.00
24HC30F8	30" Hydrocyclone	8,232.00
24HC4	4" Hydrocyclone	447.00
24HC6	6" Hydrocyclone	537.00
24HC8HV	8" H Hydrocyclone	854.00
24HC8V	8" Hydrocyclone	667.00

Manual Disc Filters



Model No.	Description	Price
25A15-***	1 1/2" Filter (any mesh)	122.00
25A17-***	1 1/2" Super Filter (any mesh)	163.00
25A30-***	2" Dual Filter (any mesh)	412.00
25A45-***	3/4" Filter (any mesh)	25.00
25A47-***	1" Filter (any mesh)	79.00
25A48-***	1" Super Filter (any mesh)	116.00
25A49-***SDS	2" Super Filter (any mesh)	428.00
25A50-***F	3" Twin Flanged Filter (any mesh)	865.00
25A50-***G	3" Twin Grooved Filter (any mesh)	830.00
25A53-***FNEW	3" Angle Flanged Filter (any mesh)	873.00
25A53-***GNEW	3" Angle Grooved Filter (any mesh)	855.00
25A78-***F	4" Twin Flanged Filter (any mesh)	1,791.00
25A80-***F	6" Twin Flanged Filter (any mesh)	2,158.00

Scan-Kleen Screen Filter Parts (Angle)



Model No.	Description	Price
25AP22371001	3" Angle Filter Body - Grooved	243.00
25AP25070308	Cone Ring for 3" Angle	13.00
25AP25070402	Cone Ring for 4" Angle	18.00
25AP25100325	Loose Flange for 3" Angle	47.00
25AP25100425	Loose Flange for 4" Angle	62.00
25AP25110103	Gauge Port Nut	4.50
25AP50052013	Seal for Quick Flange for 3" Angle	16.00
25AP50052014	Seal for Quick Flange for 4" Angle	18.00
25AP50060004	Gauge Port Seal	6.60
25AP50401012	Bolt 6.3 x 38	1.80
25AP50420060	Clamp	145.00
25AP50540212	1/2" Flushing Ball Valve	26.00
25AP534341	Hydraulic Seal	19.00
27AP22020066	Cover Assembly	544.00
27AP22471001	4" Angle Filter Body - Grooved	269.00
27AP25030407	Lower Seat	197.00
27AP25050402	Dirt Collector Axis	24.00

Filtration

Scan-Kleen Screen Filter Parts (Angle)

Model No.	Description	Price
27AP25050403	Dirt Collector	319.00
27AP25070409	Clamping Disc	8.20
27AP25300409	Handle	31.00
27AP50022250250	Screen Seal	7.40
27AP50031403	O-Ring 14 x 3	2.50
27AP50520821	200 Mesh Screen	323.00
27AP50520822	120 Mesh Screen	323.00
27AP50520823	150 Mesh Screen	323.00
27AP50520825	80 Mesh Screen	323.00
27AP50520827	40 Mesh Screen	323.00
27AP50540017	1" Ball Valve	39.00

Scan-Kleen Screen Filter Parts (Twin)



Model No.	Description	Price
25AP22450001	4" Twin Filter Body - Grooved	820.00
25AP22460001	6" Twin Filter Body - Grooved	820.00
25AP25070402	Cone Ring for 4" Twin	18.00
25AP25070602	Cone Ring for 6" Twin	28.00
25AP25100425	Loose Flange for 4" Twin	62.00
25AP25100625	Loose Flange for 6" Twin	129.00
25AP25110103	Gauge Port Nut	4.50
25AP50032311	O-Ring 2 x 311	4.80
25AP50052014	Seal for Quick Flange for 4" Twin	18.00
25AP50052016	Seal for Quick Flange for 6" Twin	28.00
25AP50060004	Gauge Port Seal	6.60
25AP50401012	Bolt 6.3 x 38	1.80
25AP50420060	Clamp	145.00
25AP50540212	3/4" Flushing Ball Valve	26.00
25AP534341	Hydraulic Seal	19.00
27AP22020066	Cover Assembly	544.00
27AP25030407	Lower Seat	197.00
27AP25050402	Dirt Collector Axis	24.00
27AP25050403	Dirt Collector	319.00
27AP25070409	Clamping Disc	8.20
27AP25300409	Handle	31.00
27AP50022250250	Screen Seal	7.40
27AP50031403	O-Ring 14 x 3	2.50
27AP50520821	200 Mesh Screen	323.00
27AP50520822	120 Mesh Screen	323.00
27AP50520823	150 Mesh Screen	323.00
27AP50520825	80 Mesh Screen	323.00
27AP50520827	40 Mesh Screen	323.00
27AP50540017	1" Ball Valve	39.00

Scan-Kleen Screen Filters



Model No.	Description	Price
27ASCAN3-120	3" Angle Scan-Kleen Screen Filter - 120 mesh	1,734.00
27ASCAN3-150	3" Angle Scan-Kleen Screen Filter - 150 mesh	1,734.00
27ASCAN4-120	4" Angle Scan-Kleen Screen Filter - 120 mesh	2,047.00
27ASCAN4-150	4" Angle Scan-Kleen Screen Filter - 150 mesh	2,047.00
27ASCAN4T-120	4" Twin Scan-Kleen Screen Filter - 120 mesh	3,836.00
27ASCAN4T-150	4" Twin Scan-Kleen Screen Filter - 150 mesh	3,836.00
27ASCAN6T-120	6" Twin Scan-Kleen Screen Filter - 120 mesh	4,036.00
27ASCAN6T-150	6" Twin Scan-Kleen Screen Filter - 150 mesh	4,036.00

Sedimentation Tank Parts

Model No.	Description	Price
44E000100	Handle	73.00
44E000101	Handle	44.00
44E000214	Tightening Bracket	44.00



Filtration

Sedimentation Tank Parts

Model No.	Description	Price
44E000216	Tightening Bracket	44.00
44E000240	Side Port Cover	46.00
44E000260	Side Port Cover	46.00
44E001340	Side Port Neoprene Cover Gasket	19.00
44E001361	Side Port Neoprene Cover Gasket	19.00
44E004365	Side Port Neoprene Cover Gasket	19.00
44E400260	Side Port Cover	51.00

Sedimentation Tanks



Model No.	Description	Price
24ST002L	1/2" inlet Sedimentation tank	223.00
24ST005L	1" inlet Sedimentation tank	263.00
24ST010FLV2	3" vic inlet Sedimentation tank	350.00
24ST060F6	6" FL inlet Sedimentation tank	818.00
24ST120F6	6" FL inlet Sedimentation tank	1,102.00
24ST220F8	8" FL inlet Sedimentation tank	1,433.00

Heavywall Dripperline

0.520" - 0.540" Inside Diameter PE (16mm) Fittings



Model No.	Description	Bag Qty
58ISV520	Inline Shut off valve	2.56
H520IC-B	Insert Coupling 16 mm	19.00
H520IMA075-B	Insert adapter 3/4" male	47.00
H520IT3-B	Insert Tee	82.00
H620FIG8-B	Figure 8 line end	21.00

0.570" - 0.600" Inside Diameter PE (17mm) Fittings



Model No.	Description	Bag Qty
58ISV600	Inline Shut-off valve	2.99
H540IAPE-B	Insert adapter for PE	52.50
H540IAPVC-B	Insert adapter for PVC with grommet	90.00
H540IC-B	Insert Coupling 17 mm	20.00
H540IMA075-B	Insert adapter 3/4" male	49.00
H540IT3-B	Insert Tee	87.00
H540ITFA075-B	Insert tee adapter 3/4" female	88.00
H620IC-B	Insert Coupling 18 mm	52.00
H800FIG8-B	Figure 8 line end	48.00

0.680" - 0.700" Inside Diameter PE (20mm) Fittings



Model No.	Description	Bag Qty
58ISV700	Inline shut-off valve	5.08
H680IC-B	Insert Coupling 20 mm	70.00
H680IMA075-B	Insert adapter 3/4" male	51.50
H680IRC540-B	Insert reducing coupling	74.00
H680IT3-B	Insert tee	107.00
H680ITFA075-B	Insert adapter 3/4" female	98.00
HPLUG	Plug	0.10

0.820" - 0.840" Inside Diameter PE Fittings



Model No.	Description	Bag Qty
H820IC-B	Coupling	101.00
H820ICR	Coupling with rings fits 35 ml	135.00
H820IRC680R	Insert adapter with ring fits 35 ml	99.00

